



# Elektronik Yayınların Akademik Kullanımı ve Edinilen Faydalar

**METİN TUNÇ**

**EKUAL 2010**

**Antalya**

**17 Mayıs 2010, Pazartesi**

# Elektronik Yayınlar ve Türkiye Bilimsel Gelişimi 1981-2009

Bilim Politikalarındaki Gelişmeler – 1981-2009

Bilimsel Yayıncılıktaki Gelişmeler – 1981-2009

ThomsonReuters, Scientific  
SCIE,SSCI ve A&HCI 1981-2009

# Bilim Politikalarındaki Gelişmeler

## 1981-2009

- **1981 Öncesi:** TÜBİTAK (1963)-ÜAK
- **1983:** Yüksek Öğretim Kurumu
- **1983:** Türk Bilim Politikası 1983-2003
- **1992:** Üniversite Sayısında Artış ( 29 + 24)
- **1993:** Türk Bilim ve Teknoloji Politikası 1993-2003
- **1993:** Bilim ve Teknoloji Yüksek Kurulu (BTYK)
- **1993:** Türkiye Bilimler Akademisi
- **1993:** Üniversite ve Kamuda Araştırma Planlama Koordinasyon Biimleri (APK)
- **1996:** Bilim ve Teknolojide Atılım Projesi / TÜBİTAK & DPT
- **1996:** 1001 Bilimsel Ve Teknolojik Araştırma Projelerini Destekleme Programı
- **1997:** Uluslararası Bilimsel Yayınları Teşvik Programı (UBYT)
- **2000:** TÜBİTAK Akademik Ar-Ge Destekleri
- **2001:** Vizyon 2023: Bilim ve Teknoloji Stratejileri
- **2006:** Üniversite Sayısında Artış

# Bilimsel Yayıncılık Hizmetlerinde Gelişmeler

## 1981-2009

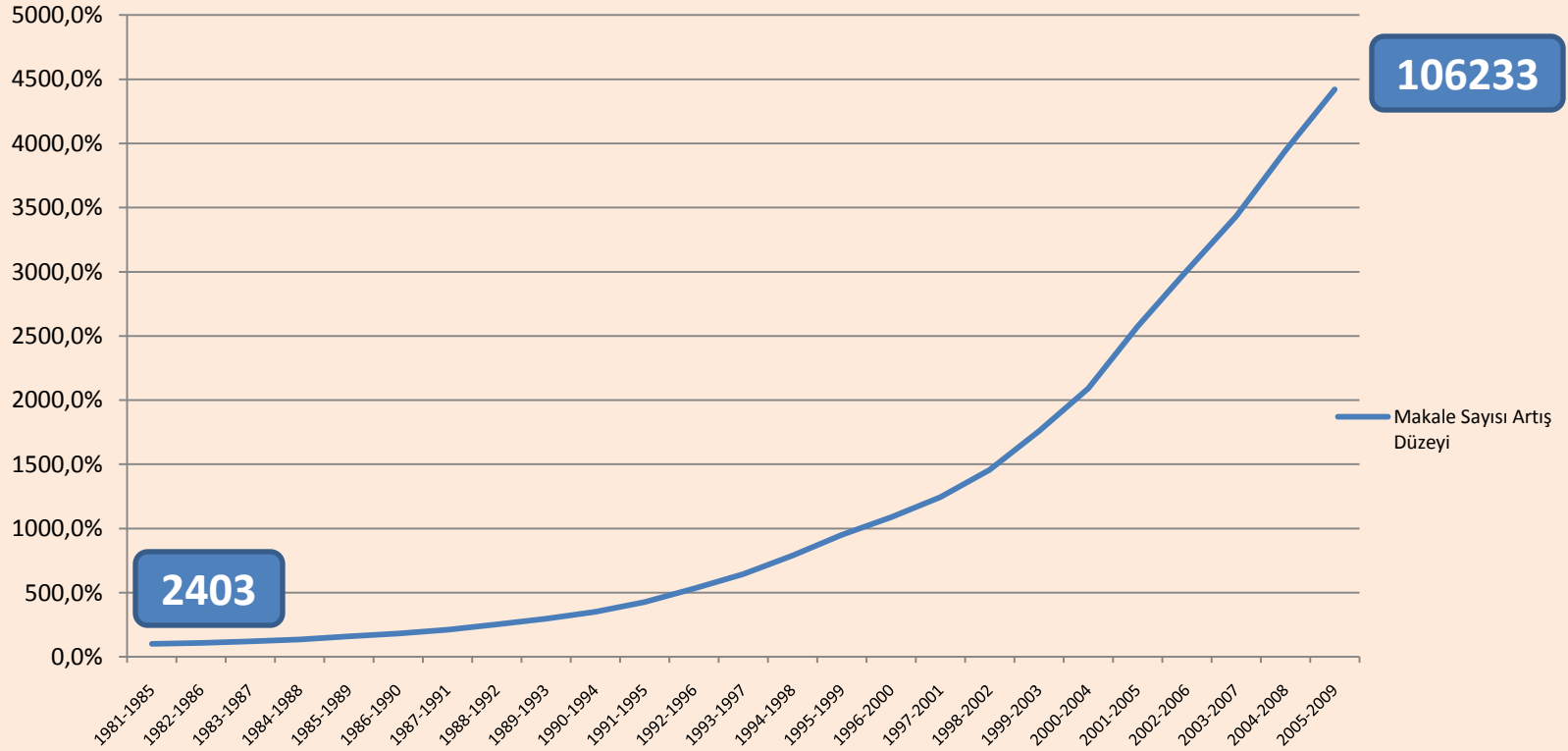
- **1981 Öncesi:** TÜRDOK (1966)
- **1983:** YÖK Dokümantasyon Merkezi
- **1986:** Bilgisayarlaşma ile Birlikte CD Rom Ortamında Elektronik Yayınlar
- **1991-1994:** Çevrimiçi Yayıncılık (Dialog)
- **1994:** INTERNET
- **1996:** ULAKBİM
- **1997:** Uluslararası Bilimsel Yayınları Teşvik Programı (UBYT)
- **1997:** ULAKBİM Ulusal Veri Tabanları(UVT)
- **2000:** Online Veritabanı için İlk Üniversiteler Konsorsiyumu (WoS)
- **2006:** Elektronik Kaynaklar Ulusal Akademik Lisans / EKUAL
- **2006-2010:** Web Of Science Atıf İndekslerine Kabul edilen Türkiye Dergi Sayısında Büyük Artış

# Türkiye Bilimsel Yayıncılık Performansı 1981-2009

- Bilimsel Makale Performansı
- Bilimsel Atıf Performansı
- Bilimsel Etki Performansı

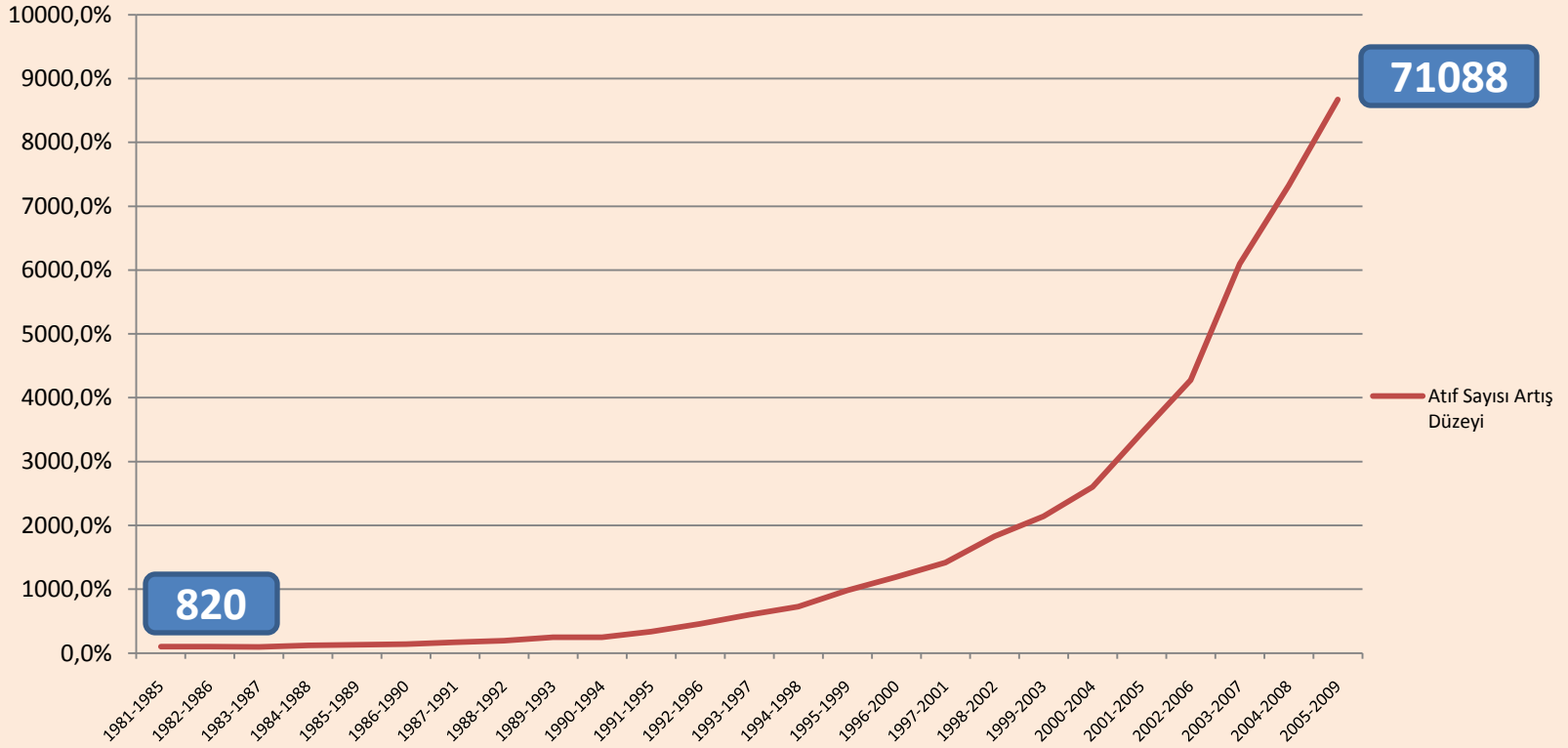
# Bilimsel Makale Performansı

## Makale Sayısı Artış Düzeyi



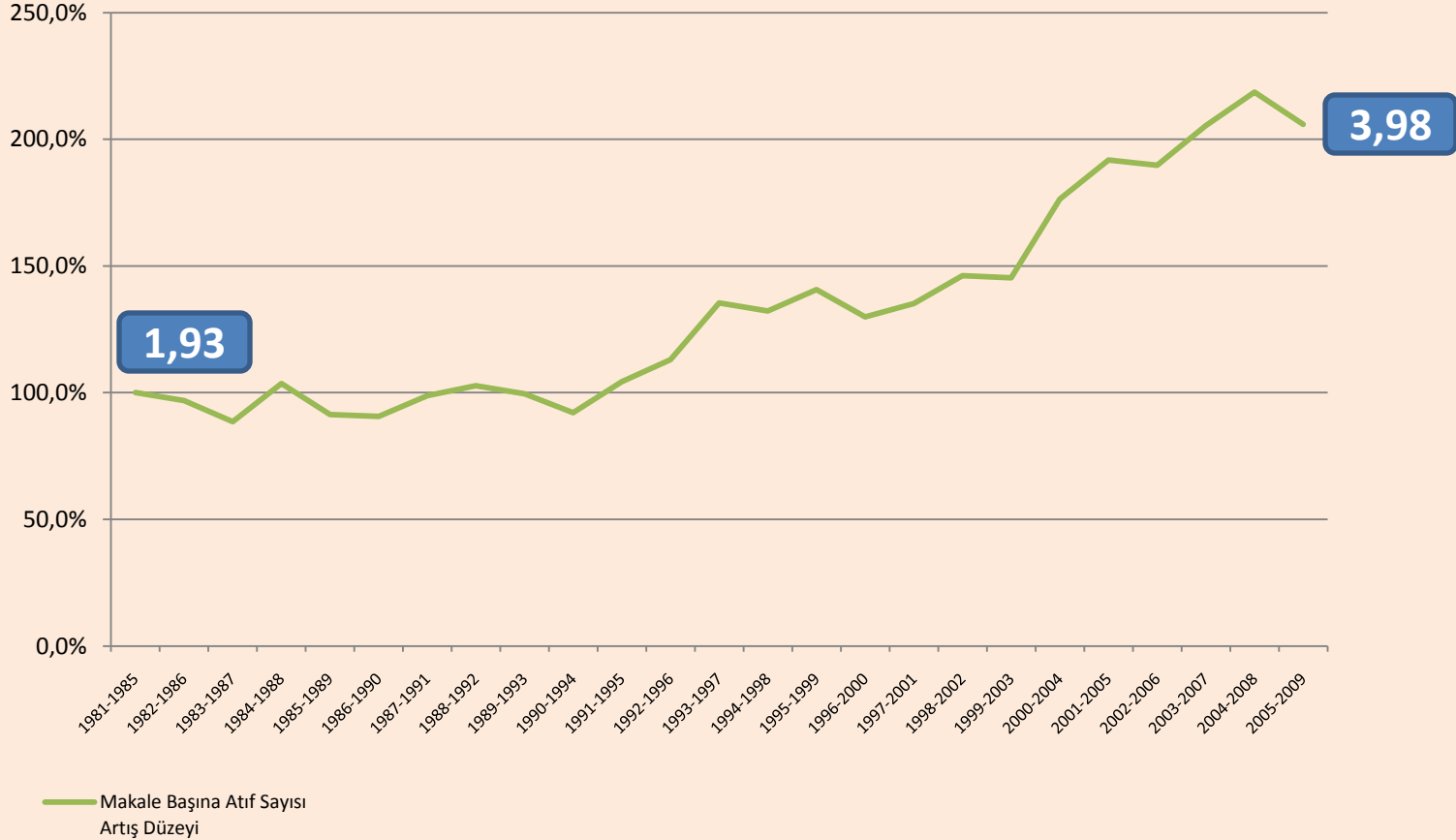
# Bilimsel Atıf Performansı

## Atıf Sayısı Artış Düzeyi

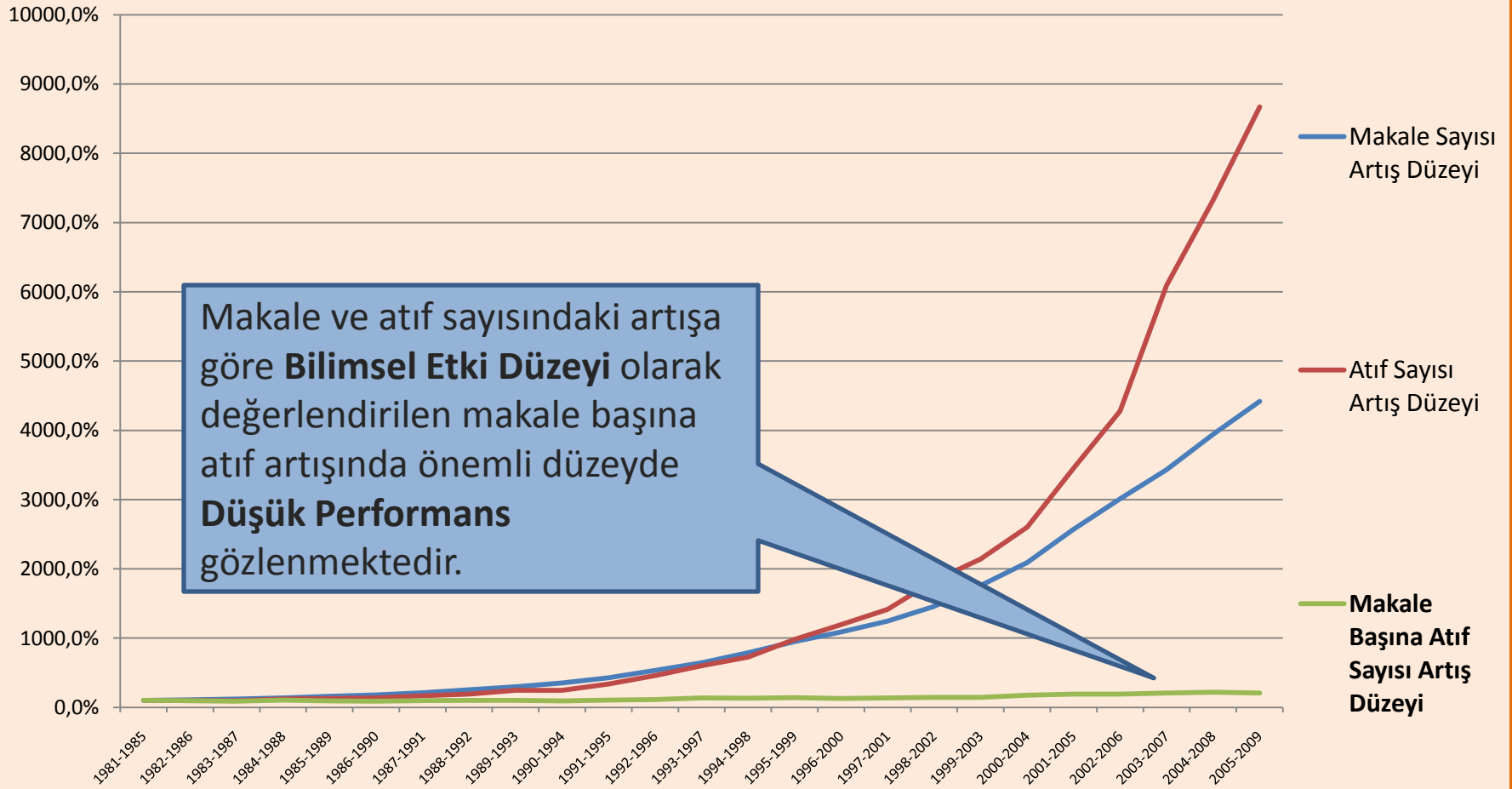


# Bilimsel Etki Performansı

## Makale Başına Atıf Sayısı Artış Düzeyi

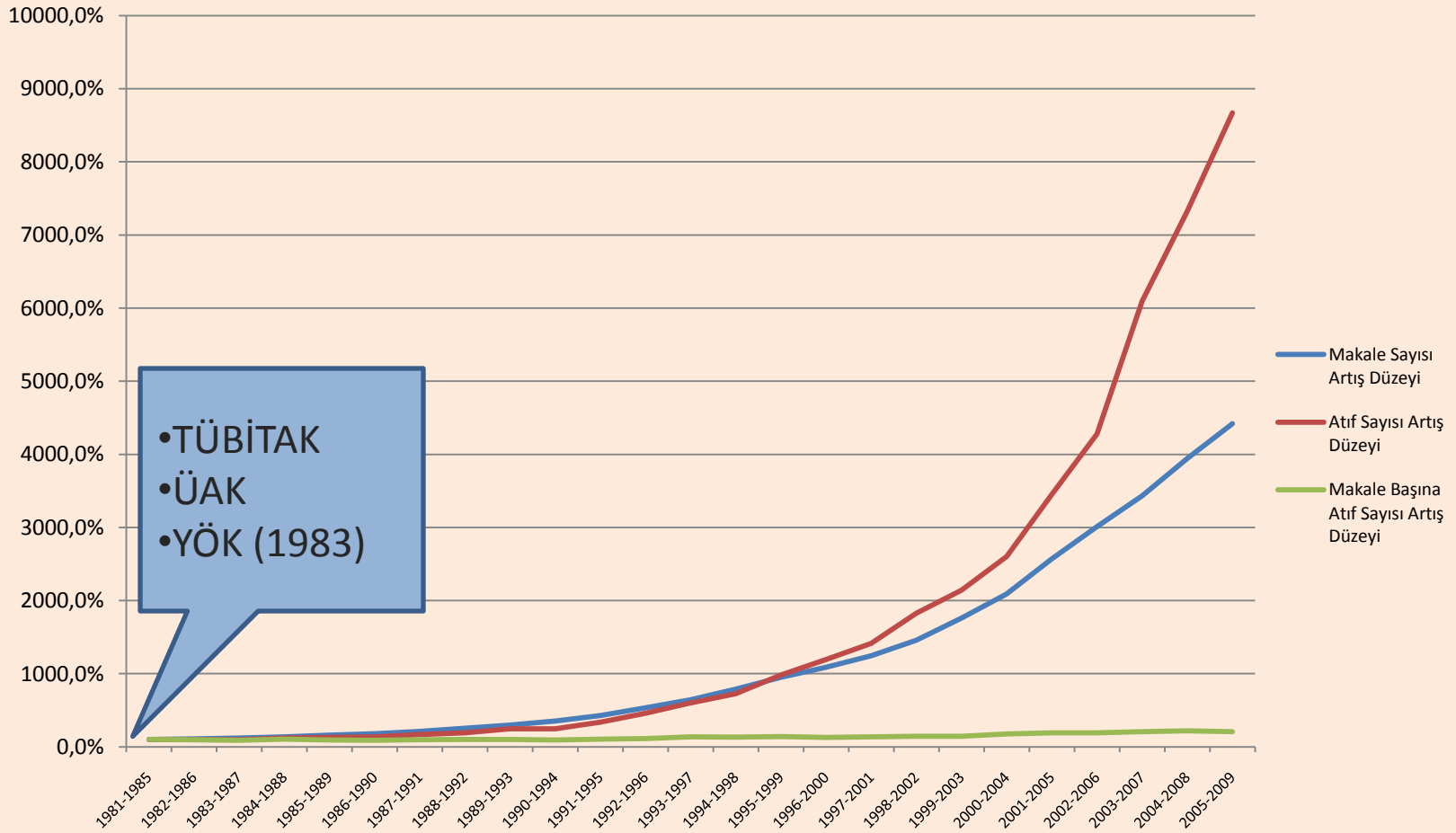


# Türkiye Bilimsel Yayıncılık Gelişim Performansı 1981-2009



# BİLİM POLİTİKALARINDAKİ GELİŞMELER

## 1981-2009

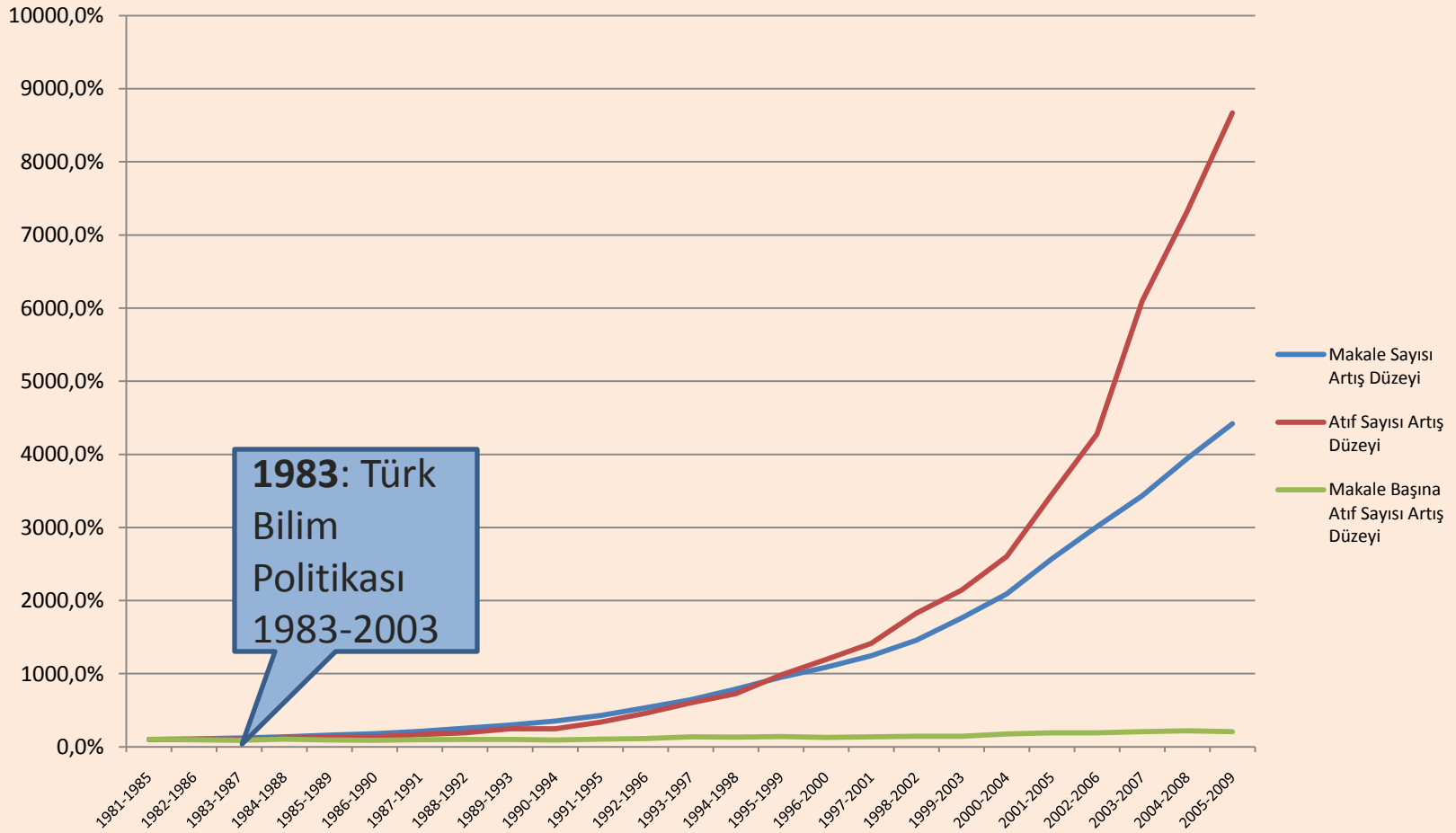


•TÜBİTAK  
•ÜAK  
•YÖK (1983)

— Makale Sayısı Artış Düzeyi  
— Atıf Sayısı Artış Düzeyi  
— Makale Başına Atıf Sayısı Artış Düzeyi

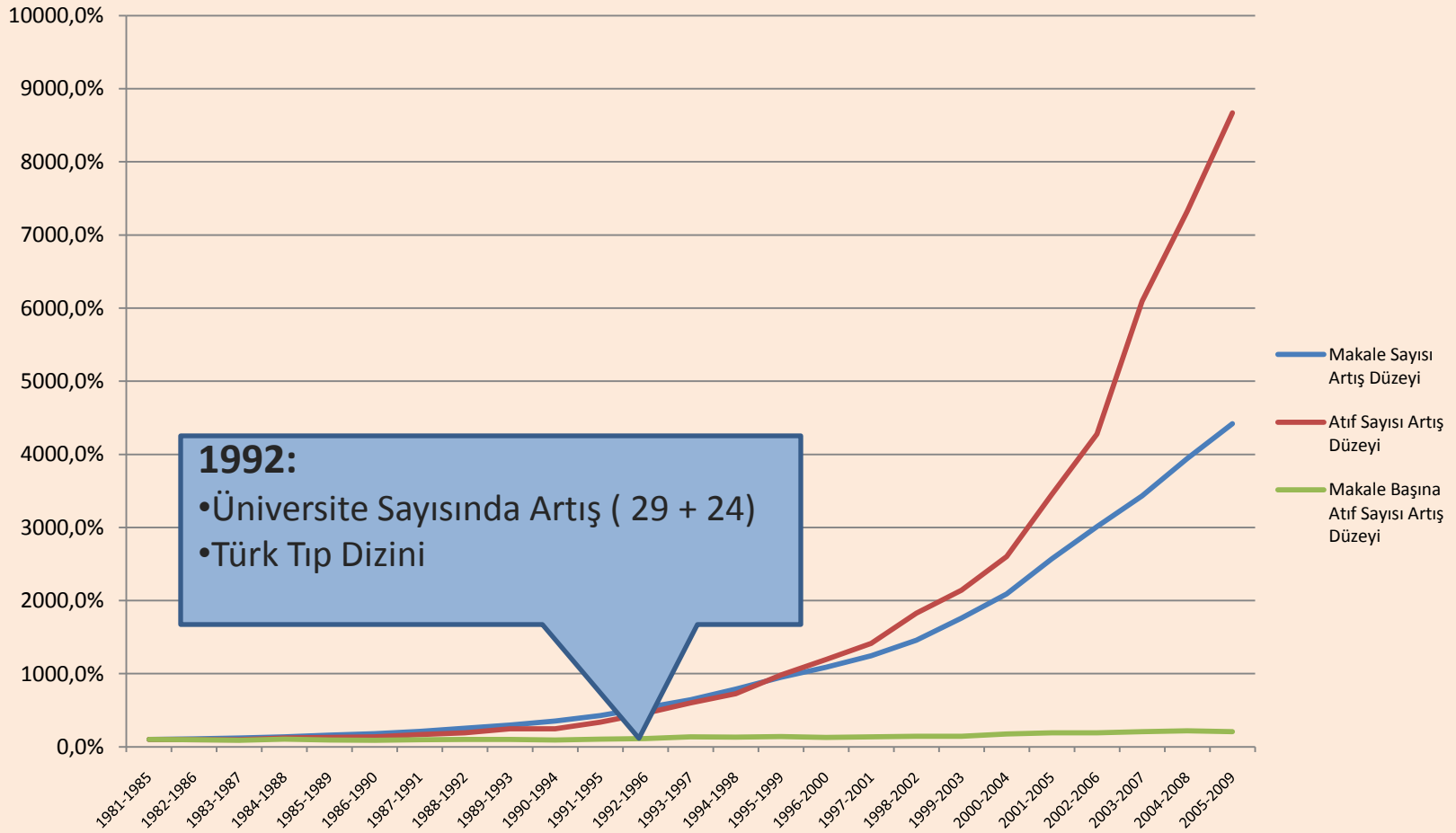
# BİLİM POLİTİKALARINDAKİ GELİŞMELER

## 1981-2009



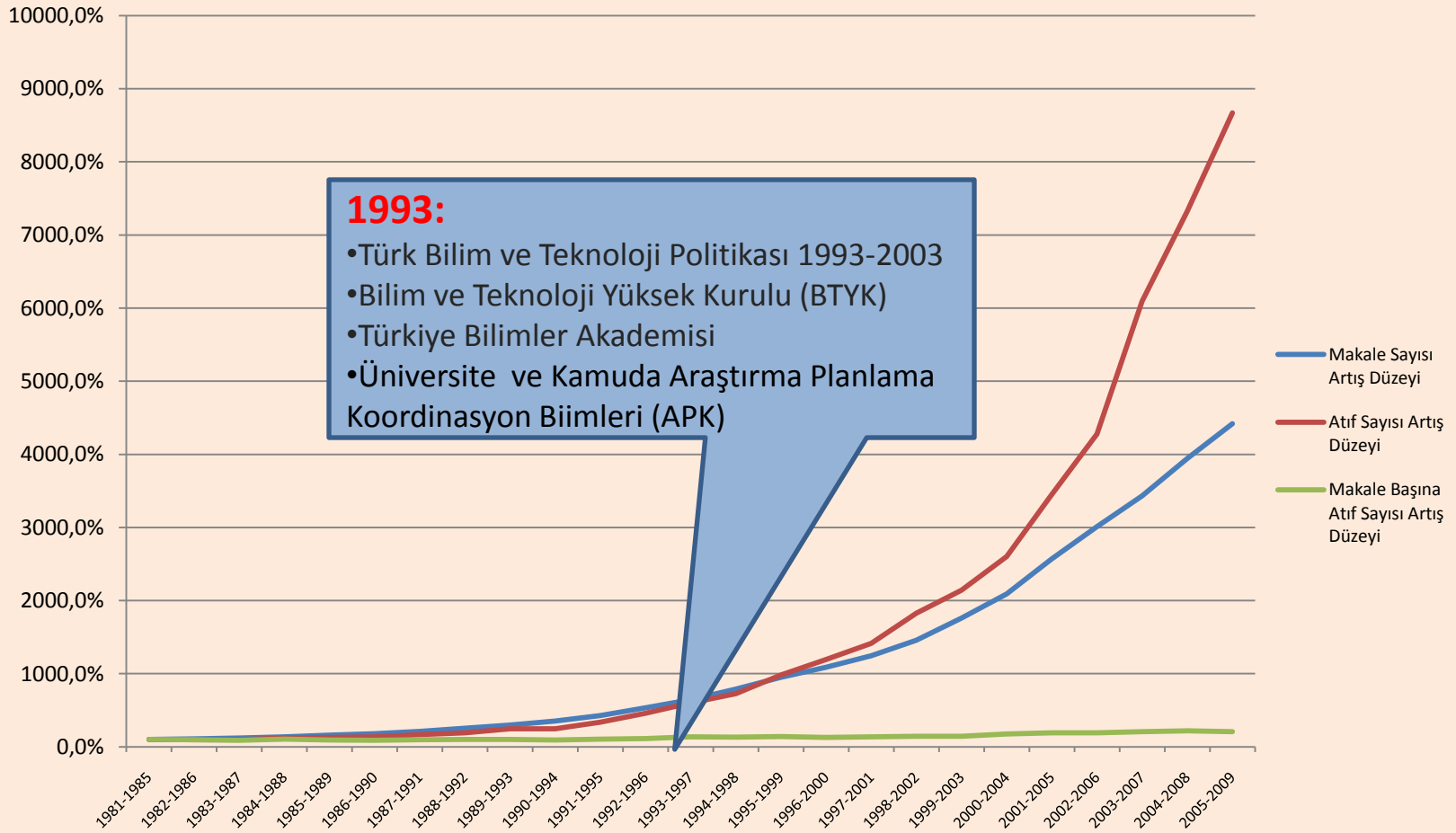
# BİLİM POLİTİKALARINDAKİ GELİŞMELER

## 1981-2009



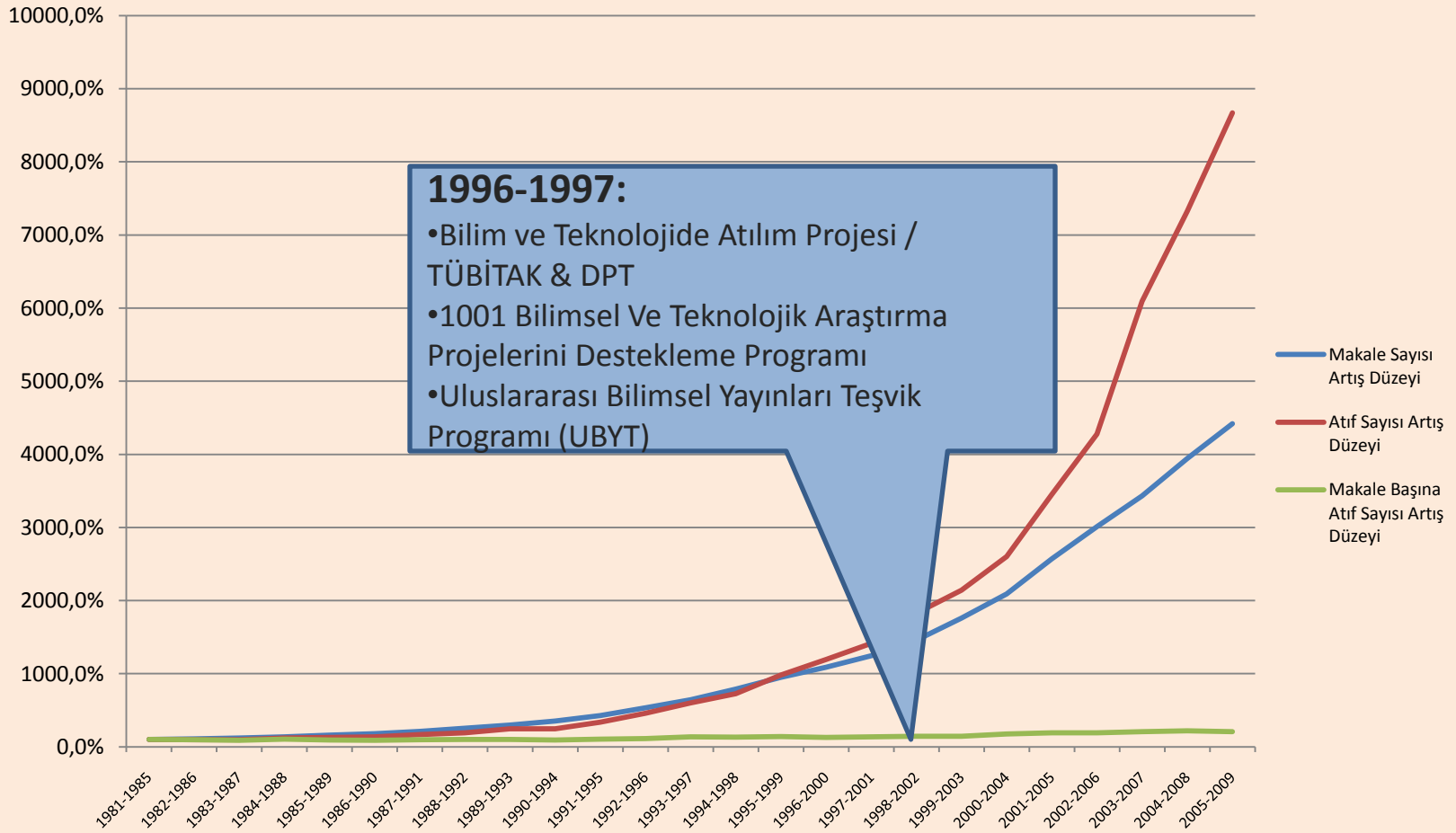
# BİLİM POLİTİKALARINDAKİ GELİŞMELER

## 1981-2009



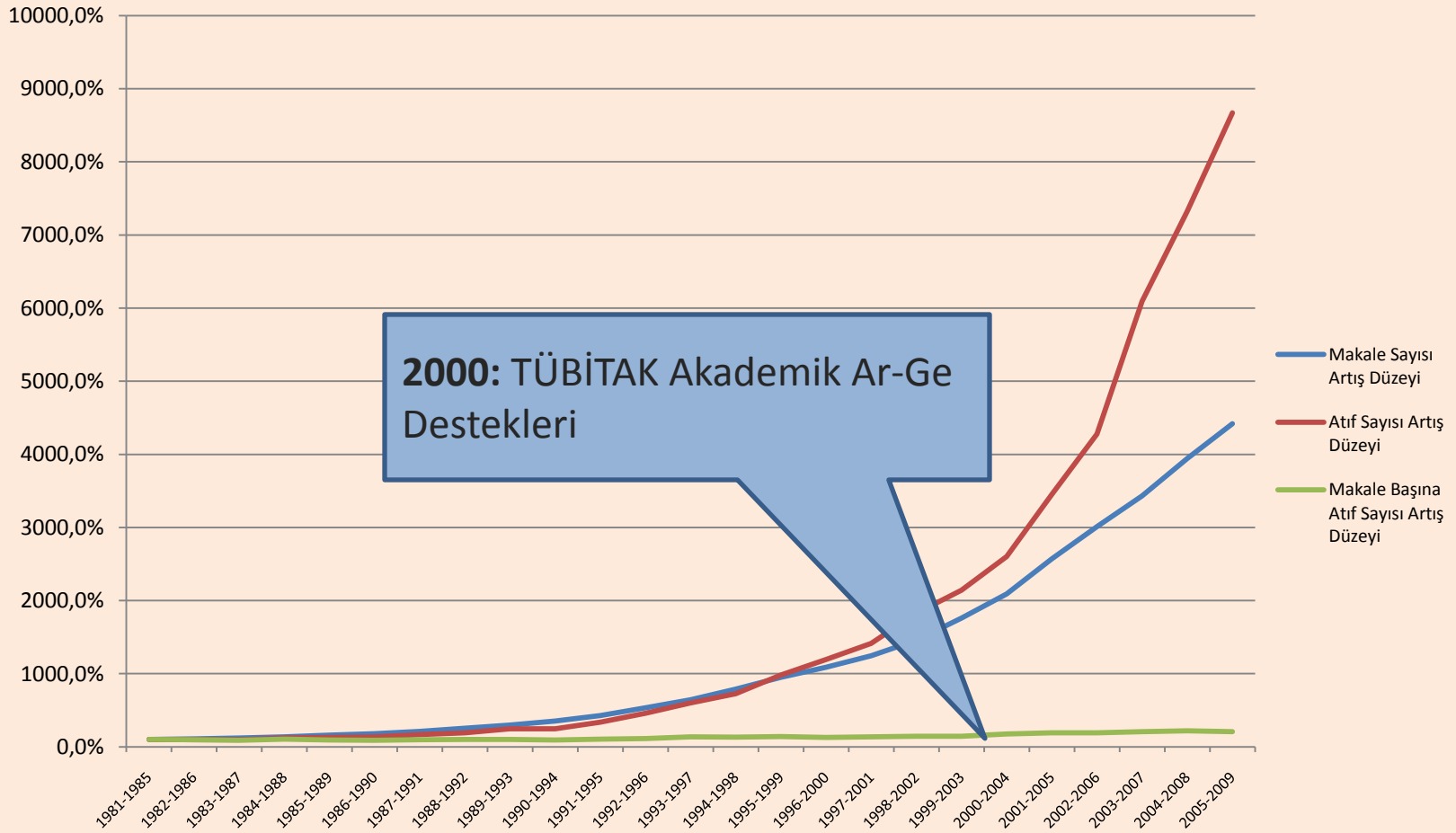
# BİLİM POLİTİKALARINDAKİ GELİŞMELER

## 1981-2009



# BİLİM POLİTİKALARINDAKİ GELİŞMELER

## 1981-2009

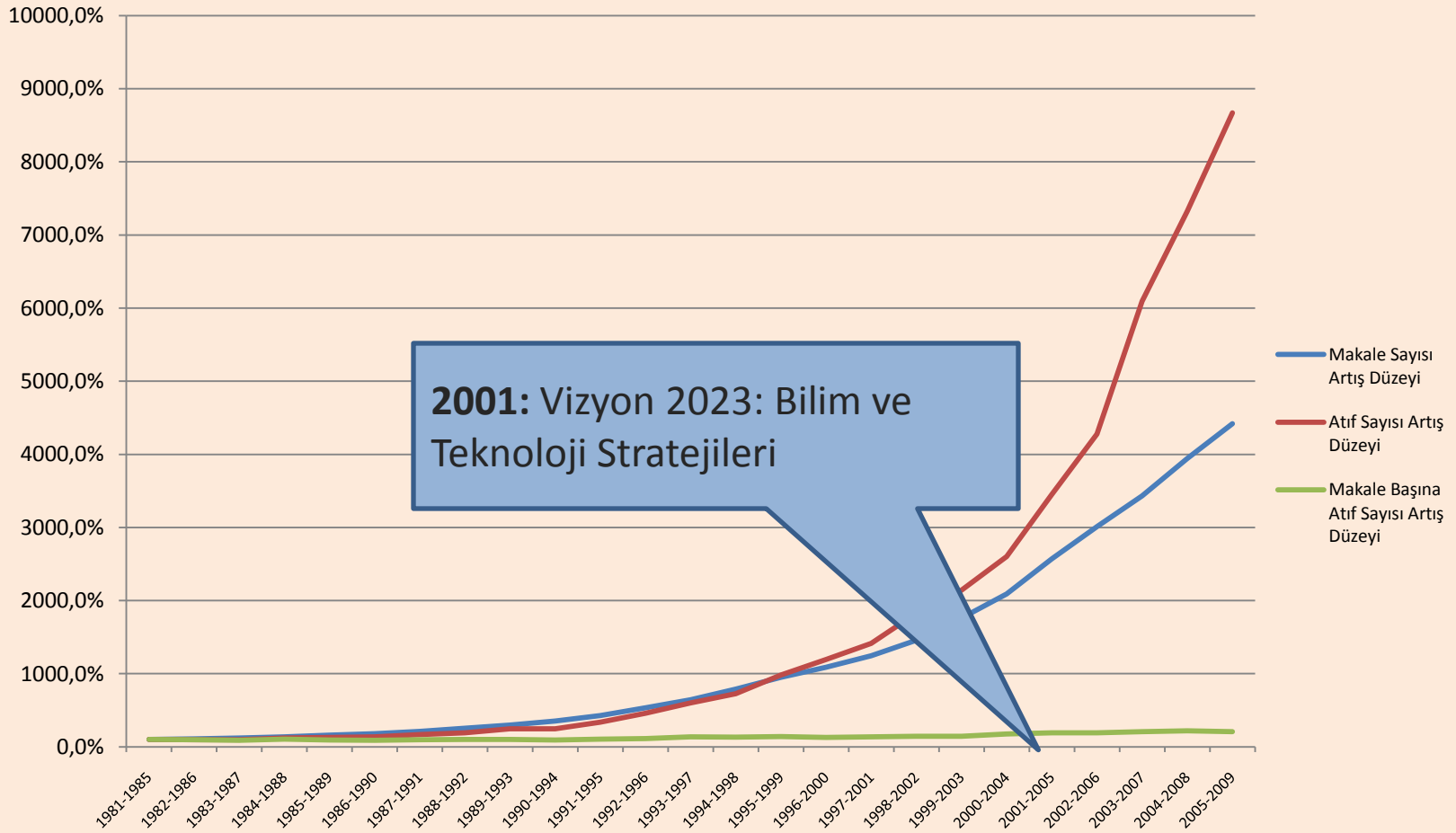


2000: TÜBİTAK Akademik Ar-Ge Destekleri

- Makale Sayısı Artış Düzeyi
- Atıf Sayısı Artış Düzeyi
- Makale Başına Atıf Sayısı Artış Düzeyi

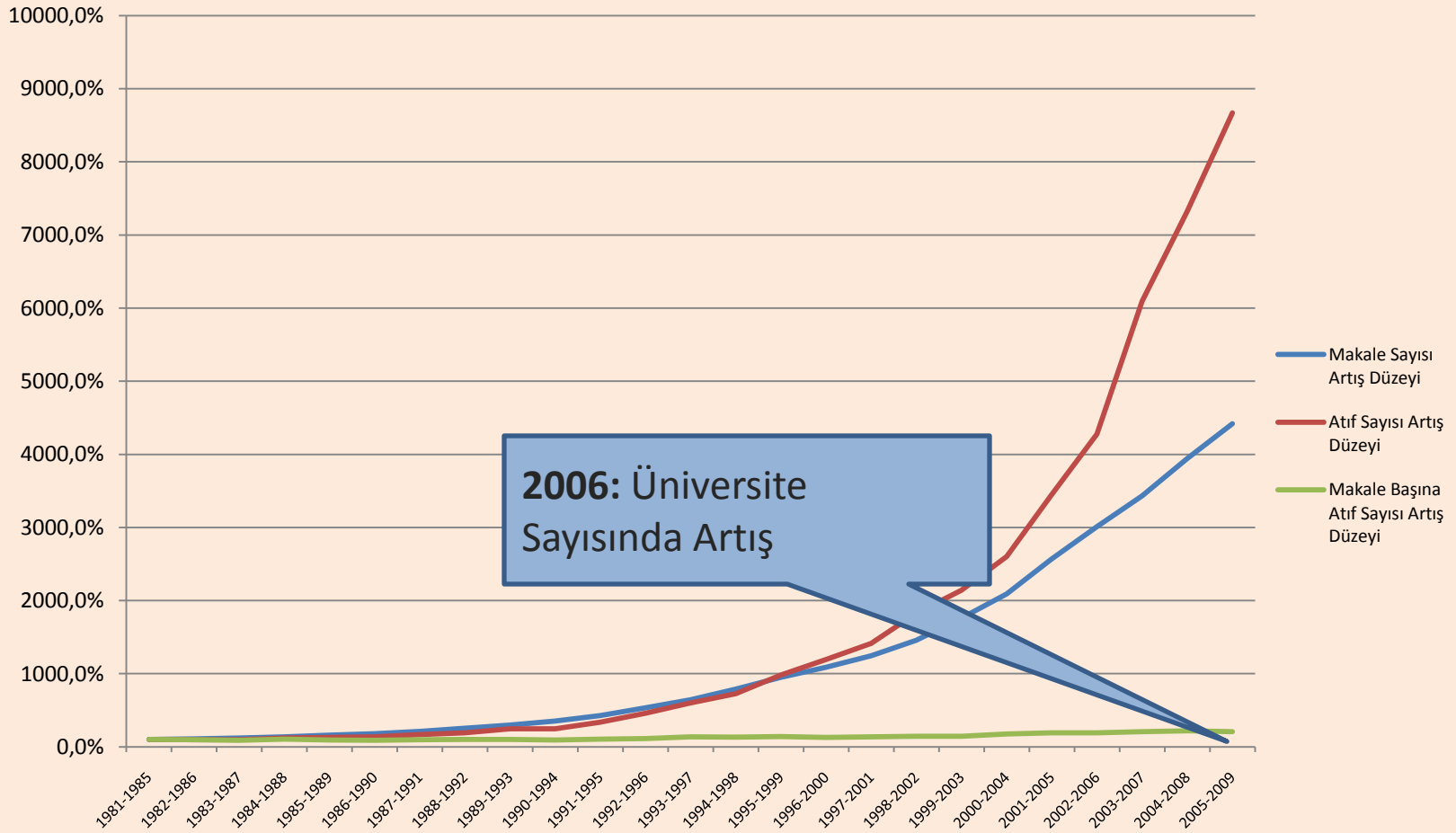
# BİLİM POLİTİKALARINDAKİ GELİŞMELER

## 1981-2009



# BİLİM POLİTİKALARINDAKİ GELİŞMELER

## 1981-2009

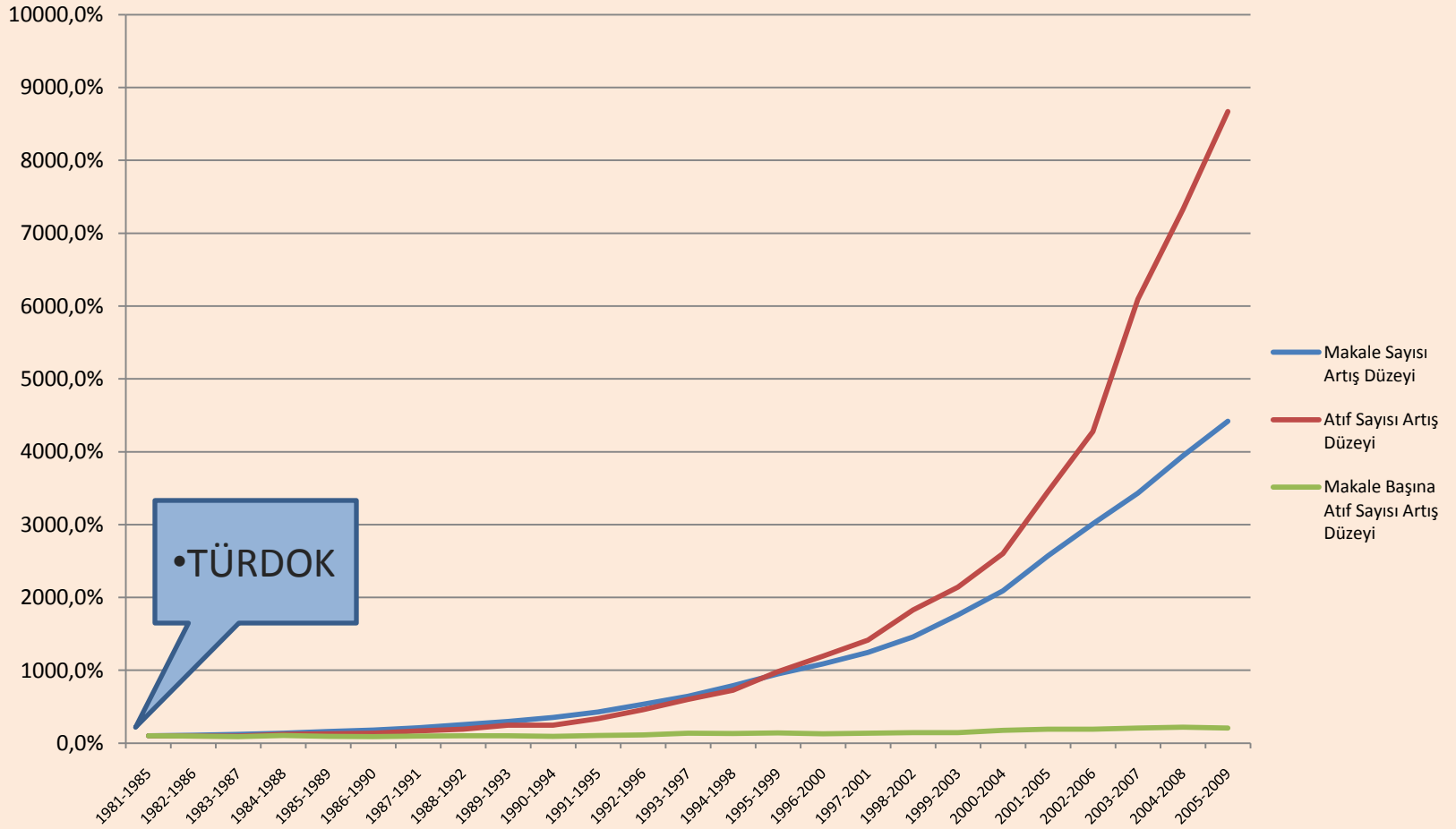


2006: Üniversite Sayısında Artış

- Makale Sayısı Artış Düzeyi
- Atıf Sayısı Artış Düzeyi
- Makale Başına Atıf Sayısı Artış Düzeyi

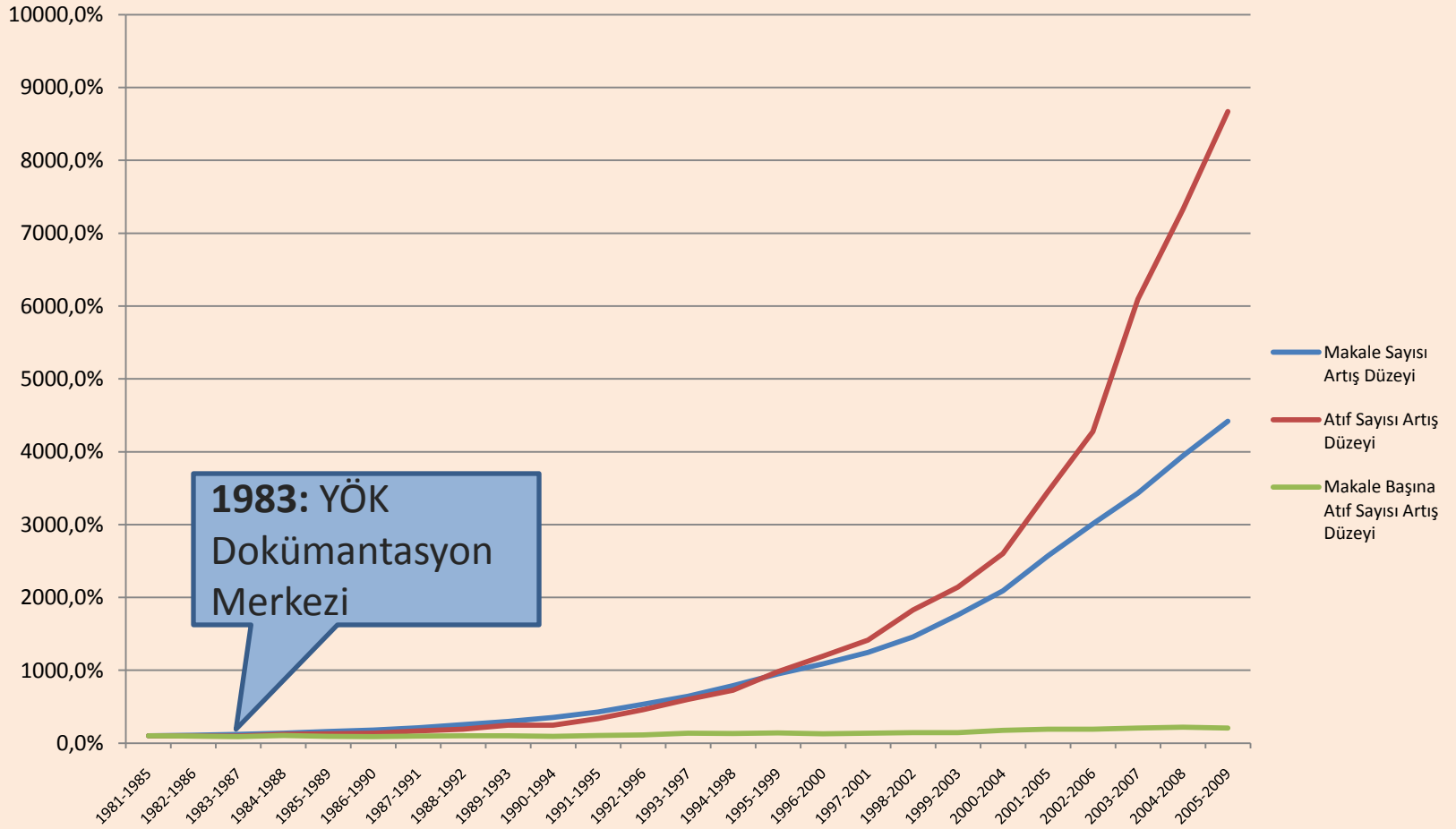
# BİLİMSEL YAYINCILIK HİZMETLERİNDE GELİŞMELER

## 1981-2009



# BİLİMSEL YAYINCILIK HİZMETLERİNDE GELİŞMELER

## 1981-2009

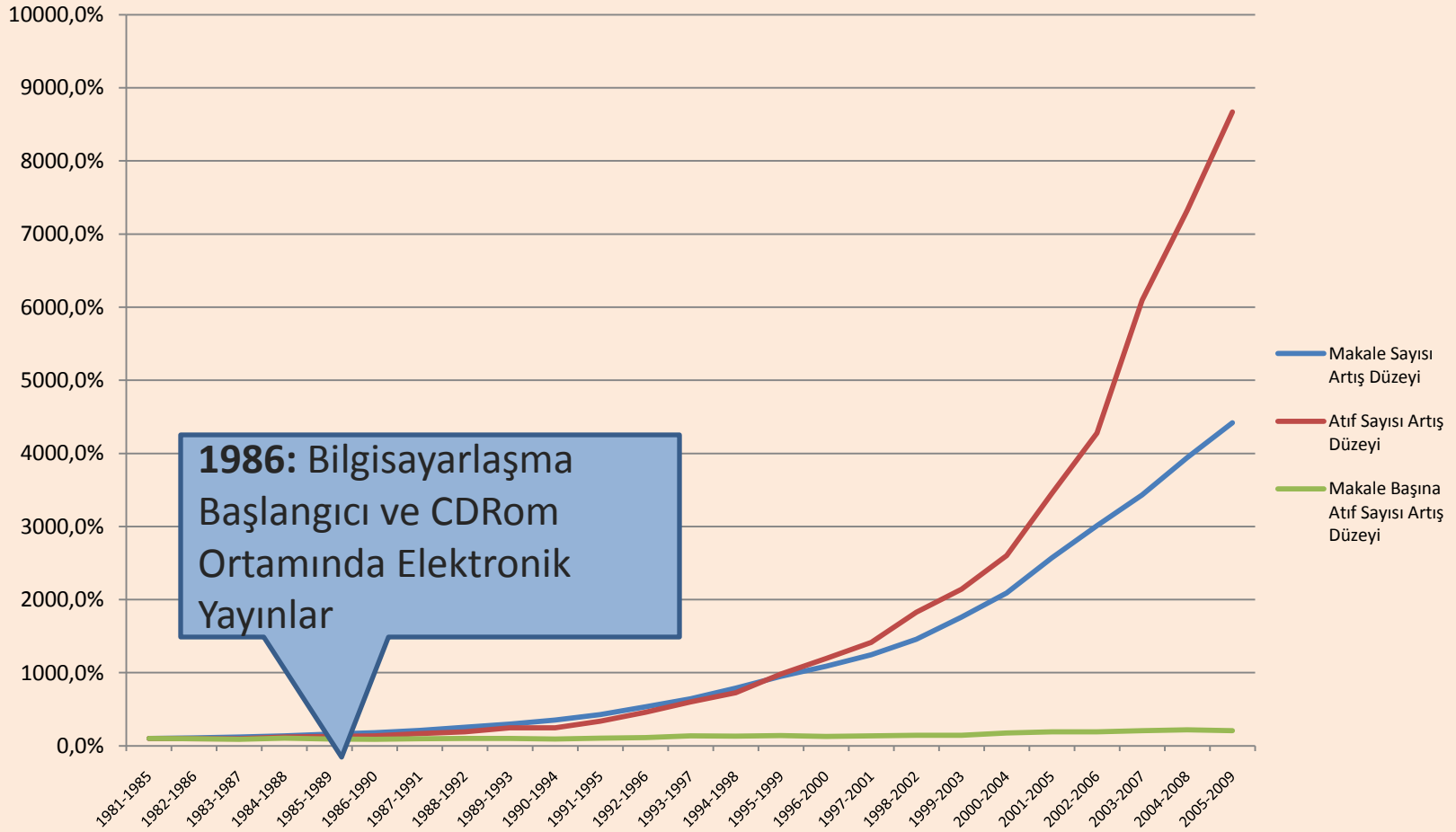


**1983: YÖK**  
Dokümantasyon  
Merkezi

— Makale Sayısı Artış Düzeyi  
— Atıf Sayısı Artış Düzeyi  
— Makale Başına Atıf Sayısı Artış Düzeyi

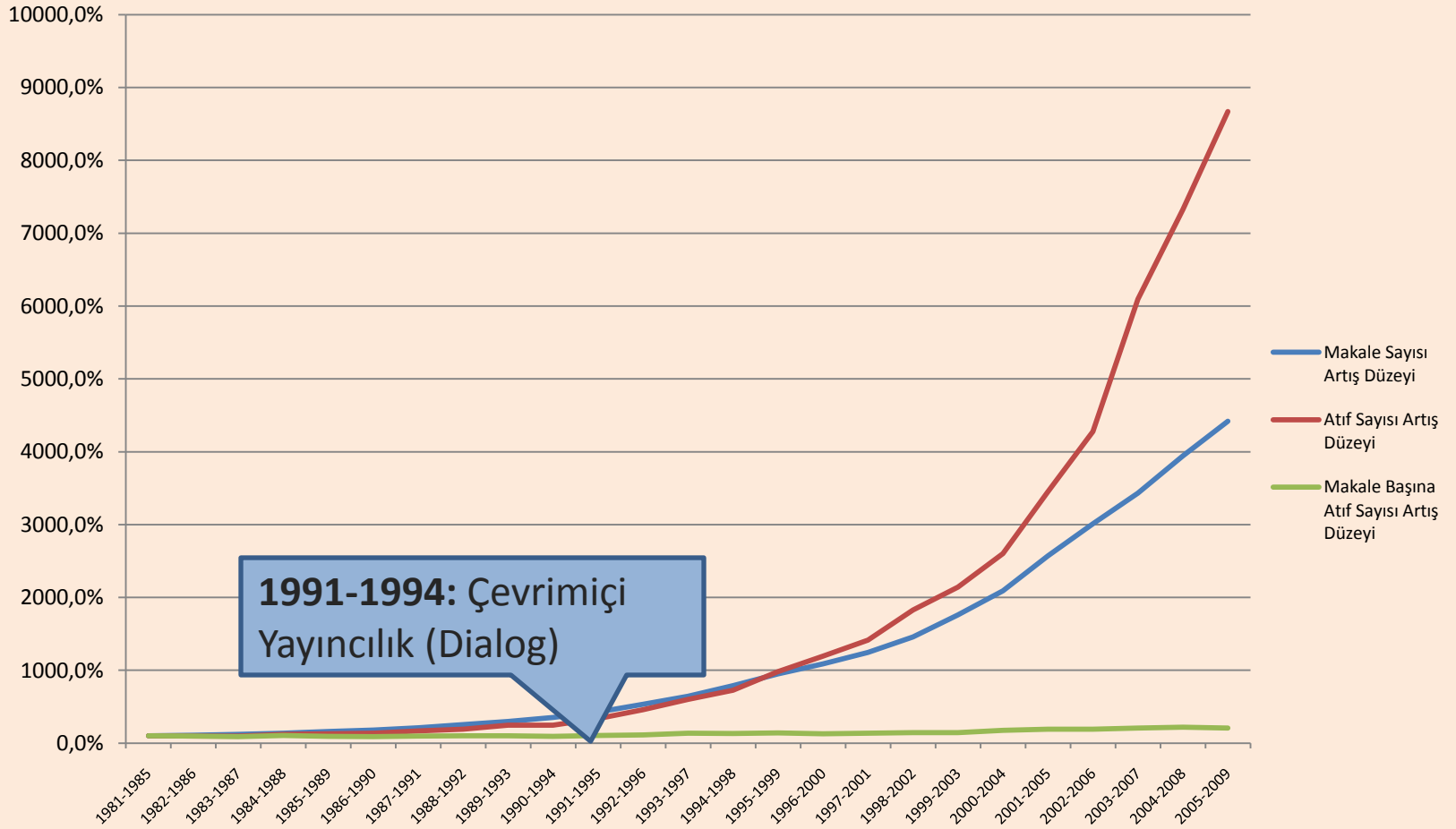
# BİLİMSEL YAYINCILIK HİZMETLERİNDE GELİŞMELER

## 1981-2009



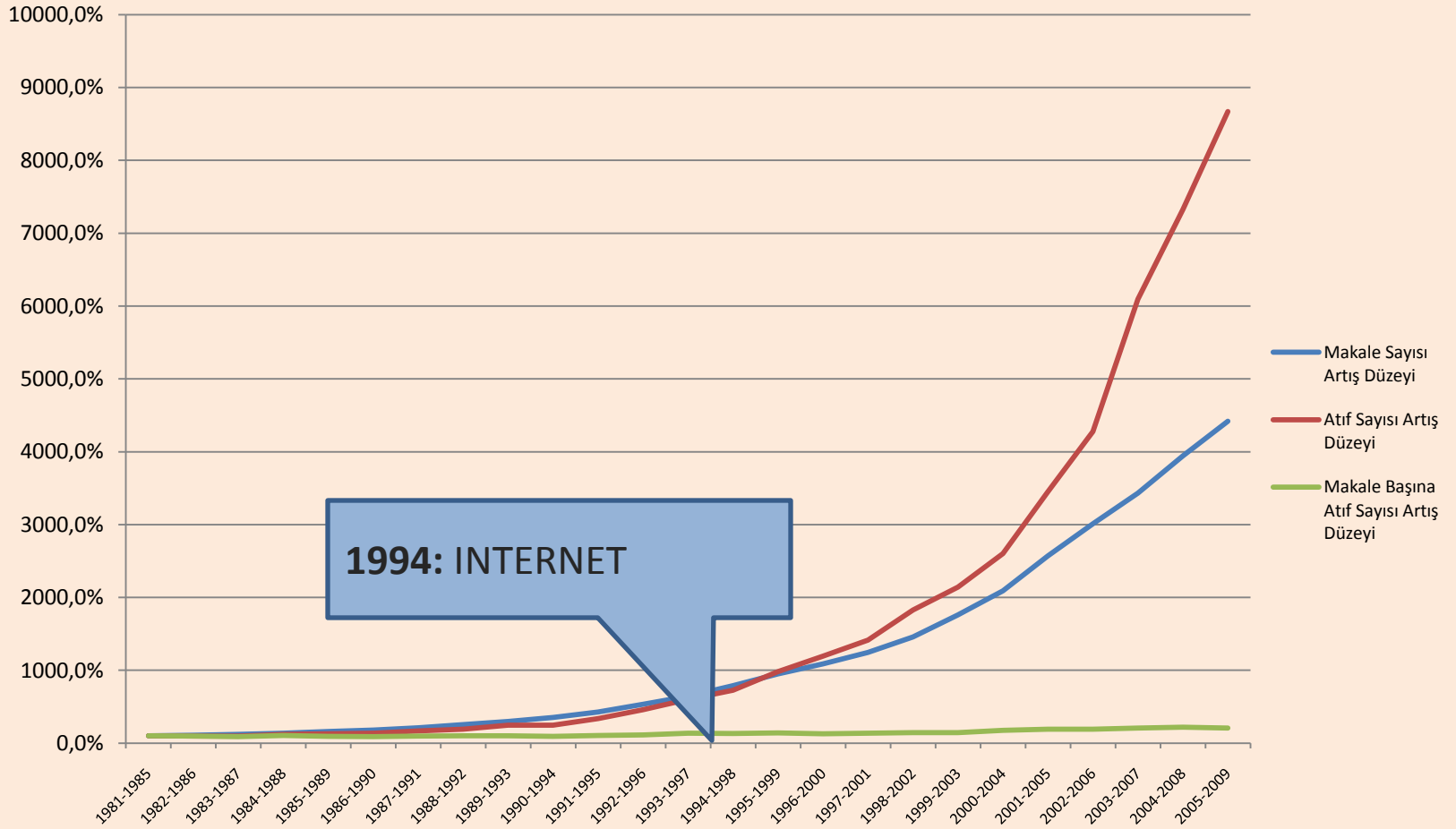
# BİLİMSEL YAYINCILIK HİZMETLERİNDE GELİŞMELER

## 1981-2009



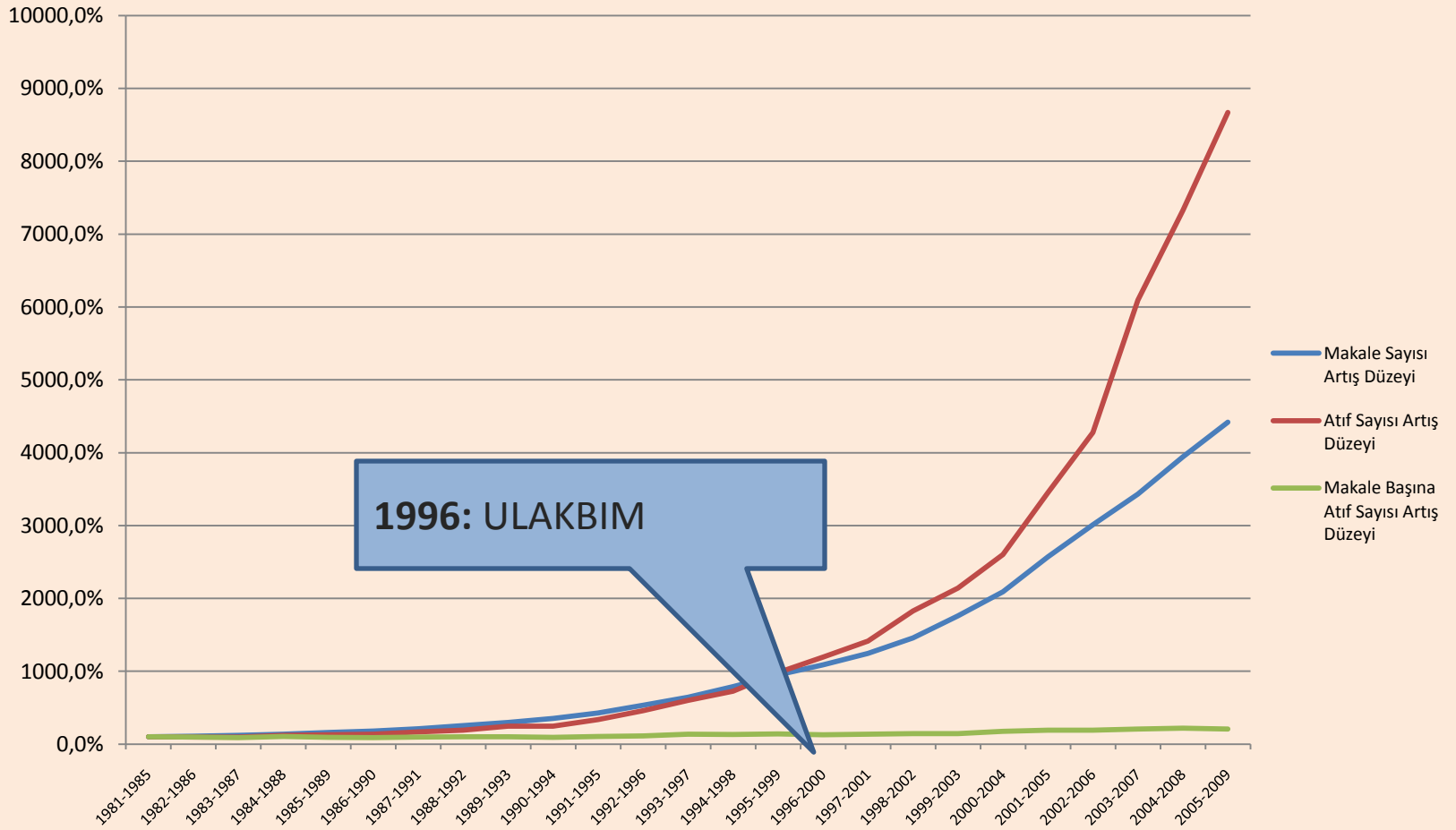
# BİLİMSEL YAYINCILIK HİZMETLERİNDE GELİŞMELER

## 1981-2009



# BİLİMSEL YAYINCILIK HİZMETLERİNDE GELİŞMELER

## 1981-2009

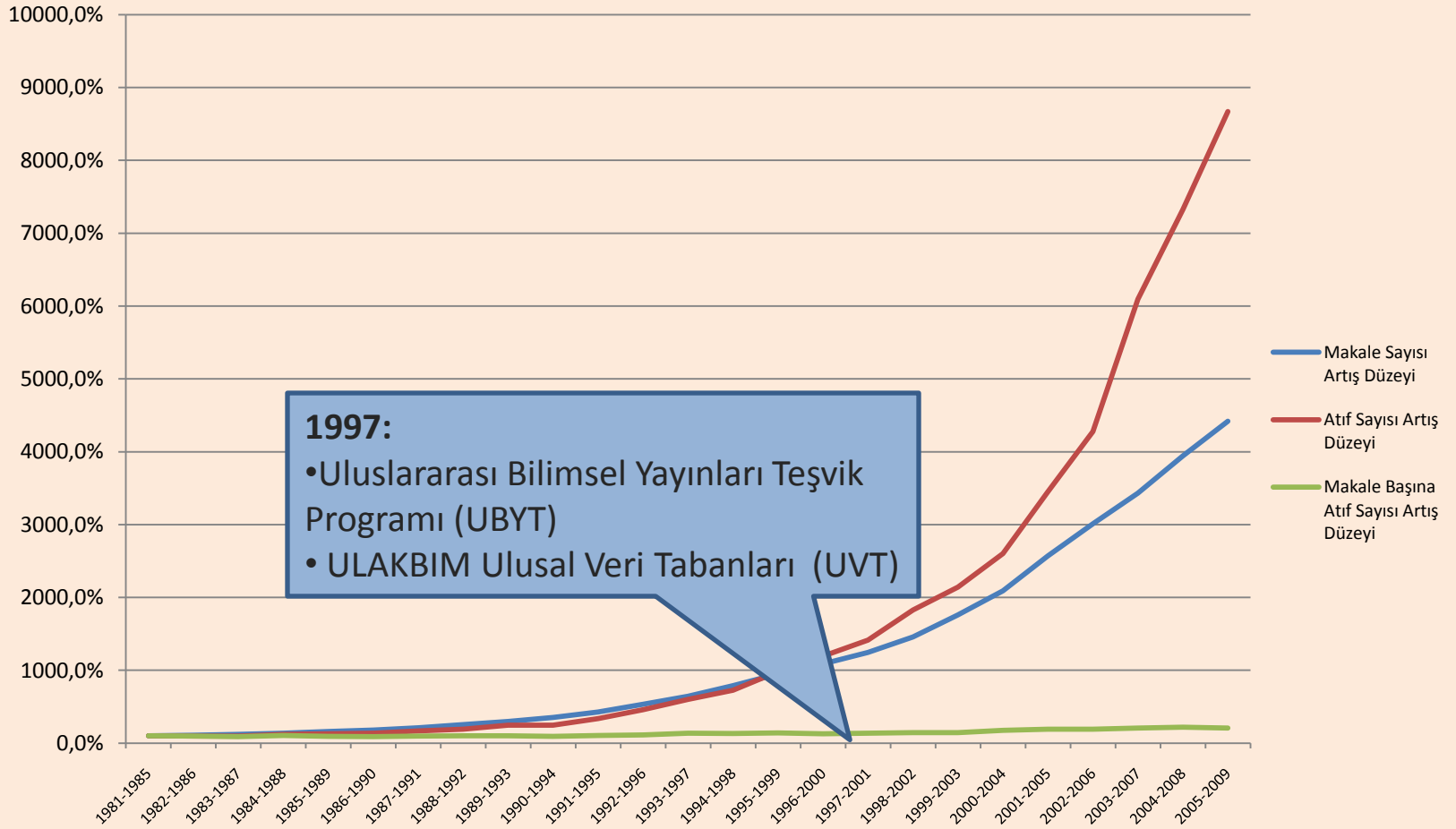


1996: ULAKBİM

- Makale Sayısı Artış Düzeyi
- Atıf Sayısı Artış Düzeyi
- Makale Başına Atıf Sayısı Artış Düzeyi

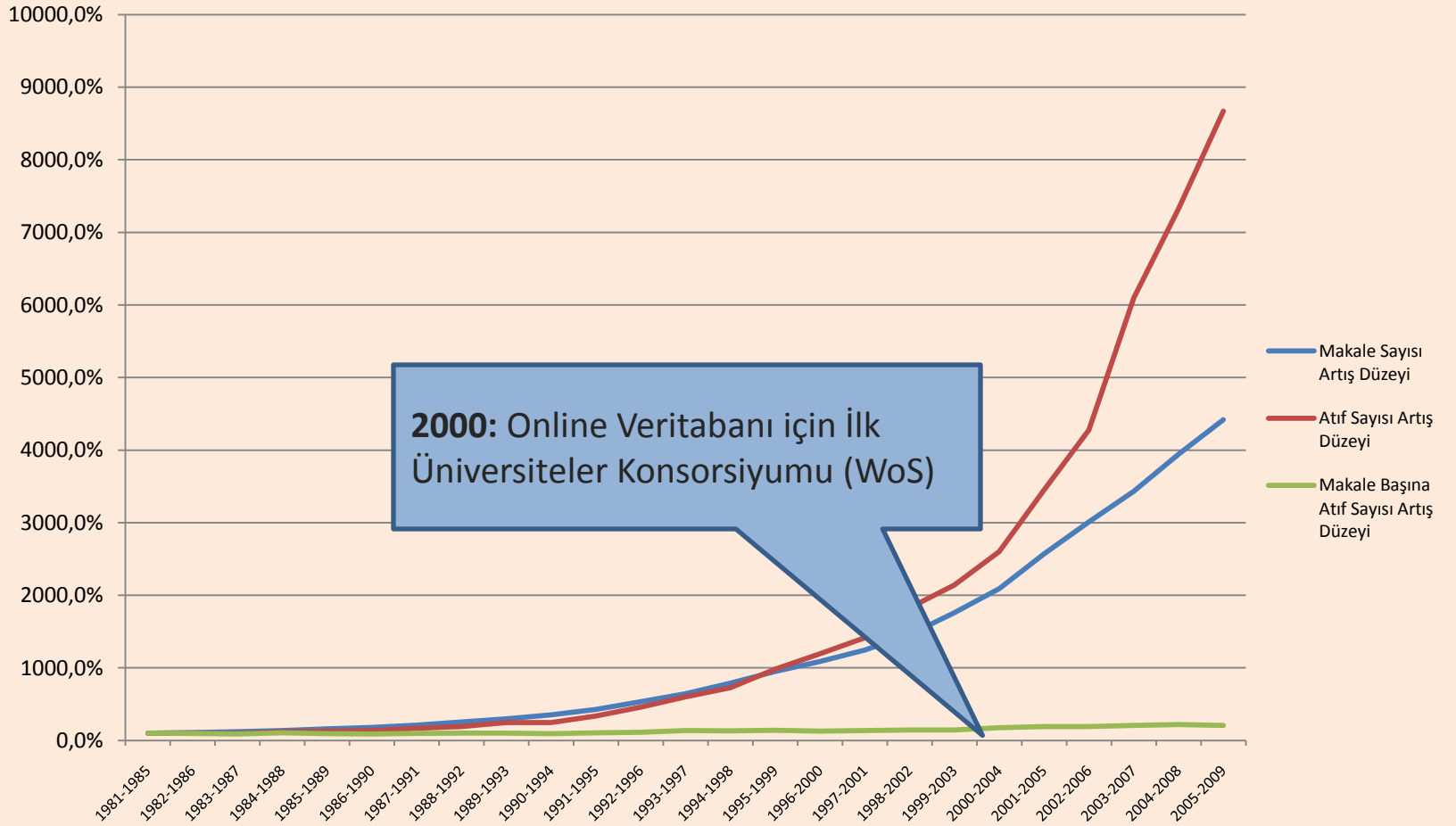
# BİLİMSEL YAYINCILIK HİZMETLERİNDE GELİŞMELER

## 1981-2009



# BİLİMSEL YAYINCILIK HİZMETLERİNDE GELİŞMELER

## 1981-2009

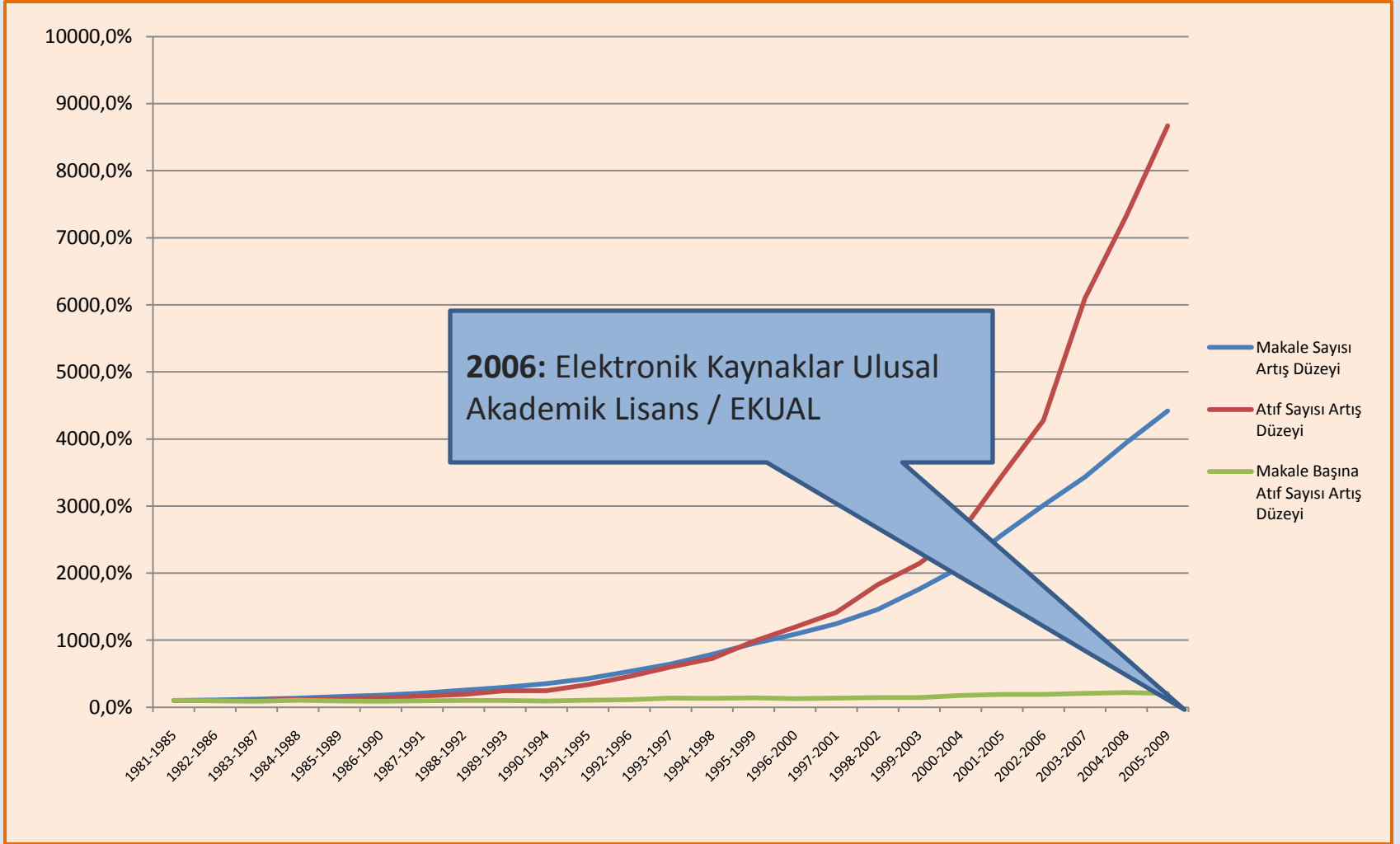


2000: Online Veritabanı için İlk Üniversiteler Konsorsiyumu (WoS)

- Makale Sayısı Artış Düzeyi
- Atıf Sayısı Artış Düzeyi
- Makale Başına Atıf Sayısı Artış Düzeyi

# BİLİMSEL YAYINCILIK HİZMETLERİNDE GELİŞMELER

## 1981-2009

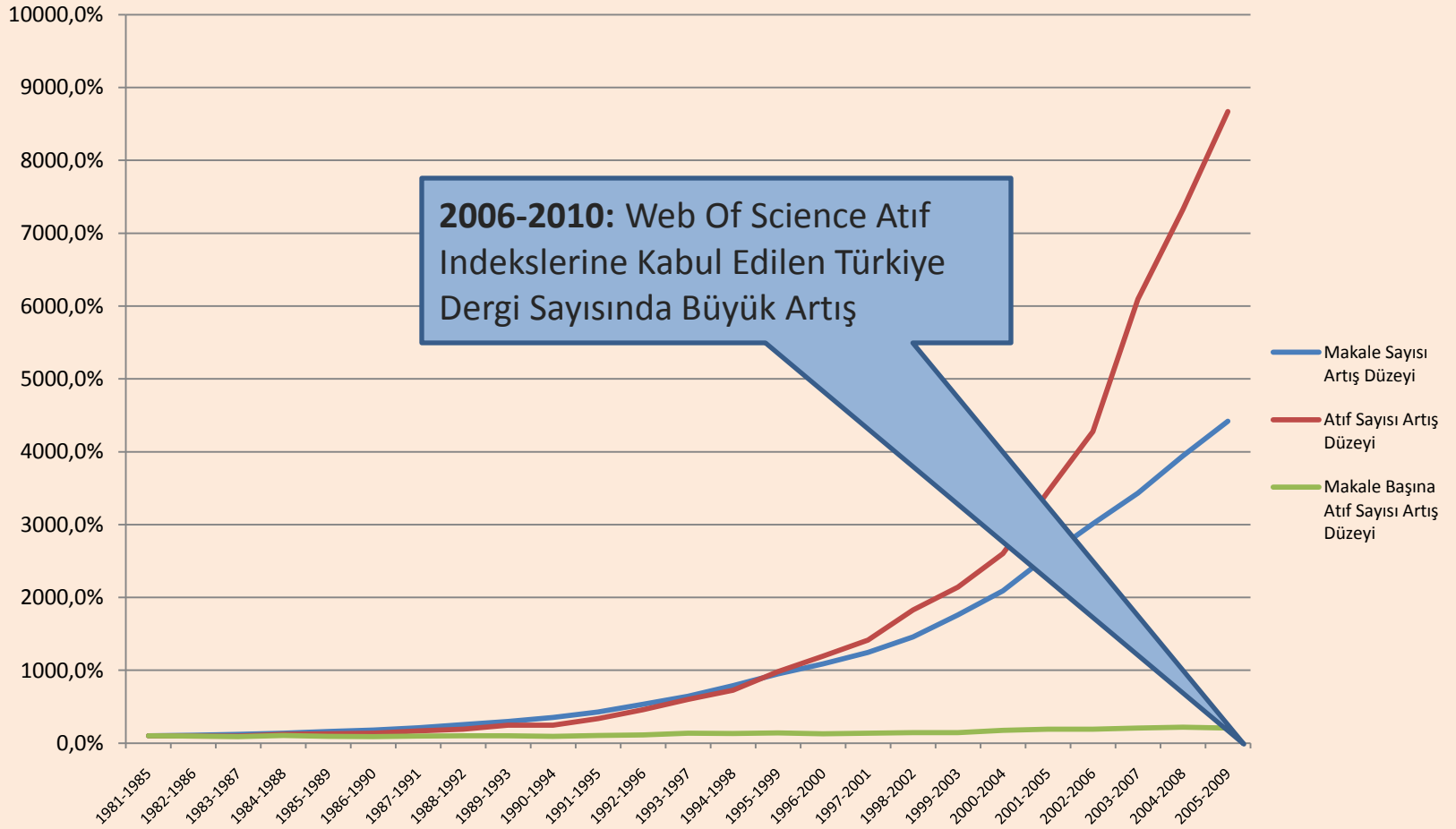


2006: Elektronik Kaynaklar Ulusal Akademik Lisans / EKUAL

- Makale Sayısı Artış Düzeyi
- Atıf Sayısı Artış Düzeyi
- Makale Başına Atıf Sayısı Artış Düzeyi

# BİLİMSEL YAYINCILIK HİZMETLERİNDE GELİŞMELER

## 1981-2009



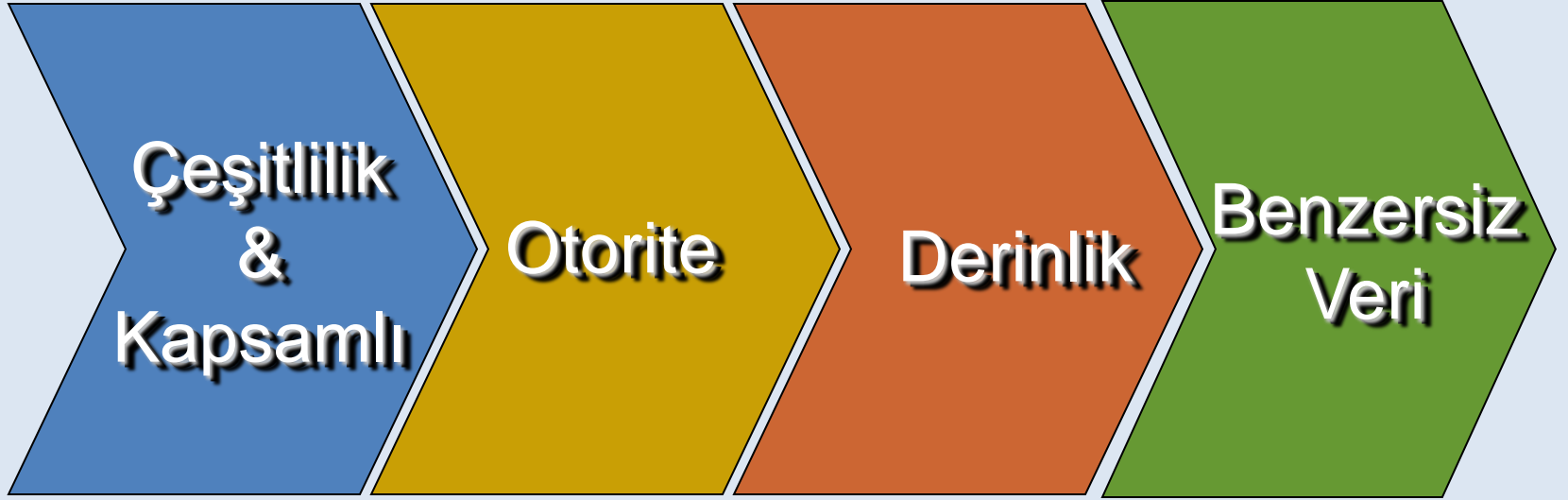
**Bilimsel Etki** kriterlerinin kullanılması geređi ařađıdaki faaliyetler iin zorunluluk haline gelmiřtir;

- Bilim Politikalarının Belirlenmesinde,
- Bilimsel Teřvik Programlarında,
- Akademik Yükseltme Deđerlendirmesinde,
- Bilimsel Arařtırma Stratejik Planlamasında,

# **Bilimsel Etki** Ölçümü İçin Önemli Kaynaklar:

- Bilimsel Atıf İndeksleri; WoS, PUBMED, CPCI, CAS, BCI, INSPEC, FSTA, CAB Abstracts.
- Journal Citation Reports
- Derwent Innovation Index Patent Veritabanı
- Web Of Knowledge
- InCites

# Web Of Science

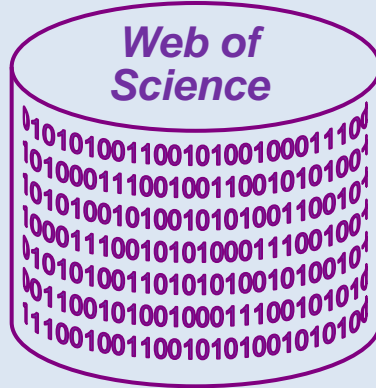


## •Otorite!

- Geriye dönük kapsam;
  - 1900– Science Citation Index Expanded, (SCIE) 7.500+ Dergi
  - 1956– Social Science Citation Index (SSCI), 3.500+Dergi
  - 1975 Arts & Humanities Citation Index (A&HCI) 1.400+ Dergi
- Tüm veriler aynı sistem ve teknikle indekslenir. Bilimsel seçicilikle yüksek kaliteli kapsam muhafaza edilir.

# Journal Citation Reports Hakkında

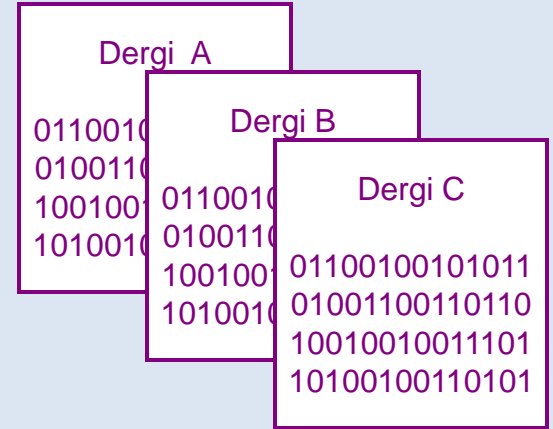
Web of Science'dan alınan dergi verileri işlenir, değerlendirilir, hesaplanır ve **"DÜNYANIN EN ÖNEMLİ DERGİLERİ"**nin bilimsel performans verileri Journal Citation Reports veritabanı ile sunulur.



Makale düzey verisi.



## Dergi Atıf Raporları



Dergi düzey verisi.

# Journal Citation Reports Neden Önemlidir?

“Etki Faktörü” uluslararası çerçevede önemli dergi performans ölçüm yöntemlerinden biridir.

Bilim insanları, yazarlar, kütüphaneciler, editörler, yayıncılar ve öğrenciler için yol göstericidir ve benzersiz bir araçtır.

Bu benzersiz veriyi tamamen **TARAFSIZ** bir hesaplama yöntemi ile yalnızca JCR sağlar.

# Journal Citation Reports Kimler İçin?

WELCOME ? HELP

**Journal Summary List**

Journals from: **subject categories CELL BIOLOGY** [VIEW CATEGORY SUMMARY LIST](#)

Sorted by: **Impact Factor** [SORT AGAIN](#)

Journals 1 - 20 (of 157)

MARK ALL UPDATE MARKED LIST

Ranking is based on your

Mark	Rank	Abbreviated Journal Title (linked to journal information)	ISSN	Total Cites	Impact Factor
<input type="checkbox"/>	1	<a href="#">NAT REV MOL CELL BIO</a>	1471-0072	19628	35.423
<input type="checkbox"/>	2	<a href="#">CELL</a>	0092-8674	142064	31.253
<input type="checkbox"/>	3	<a href="#">NAT MED</a>	1078-8956	48632	27.553
<input type="checkbox"/>	4	<a href="#">ANNU REV CELL DEV BI</a>	1081-0706	8063	22.731
<input type="checkbox"/>			7392	22676	17.774

Ben bir akademisyenim ve makalemi yayınlamak istiyorum, hangi dergide yayınlarsam akademik olarak sesimi daha çok kişiye duyurabilirim?

Ben bir kütüphaneciyim, koleksiyonumu geliştirmek istiyorum. hangi kaynakları edinirsem koleksiyonum zenginleşir?

Journal Citation Reports®

WELCOME ? HELP

**Journal Summary List**

Journals from: **publishers IEEE COMPUTER SOC**

Sorted by: **Total Cites** [SORT AGAIN](#)

Journals 1 - 20 (of 21)

MARK ALL UPDATE MARKED LIST

Ranking is based

Mark	Rank	Abbreviated Journal Title (linked to journal information)	ISSN	Total Cites
<input type="checkbox"/>	1	<a href="#">IEEE T PATTERN ANAL</a>	0162-8828	24674
<input type="checkbox"/>	2	<a href="#">IEEE T COMPUT</a>	0018-9340	9240
<input type="checkbox"/>	3	<a href="#">IEEE T SOFTWARE ENG</a>	0098-5589	5449
<input type="checkbox"/>	4	<a href="#">IEEE T KNOWL DATA EN</a>	1041-4347	3813
<input type="checkbox"/>	5	<a href="#">COMPUTER</a>	0018-9162	3133
<input type="checkbox"/>	6	<a href="#">IEEE T PARALL DISTB</a>	1045-9219	3003

Ben bir yayıncıyım. Hakemli bilimsel dergimiz nasıl bir performans ortaya koymuş?

## Conference Proceedings Citation Index

- İki Edisyon:
  - Science
  - Social Sciences & Humanities
- 120,000'den fazla konferansa ait bildiri,
- Her yıl yaklaşık 12,000 yeni konferansa ait bildiriler,
- Toplamda yaklaşık 6 milyon konferans bildirisi,
- Her yıl 400,000'in üstünde yeni bildiri,
- Haftalık güncelleme,
- 1990'dan günümüze arşiv kapsamı,
- Ön basım, dizi, kitap, dergi ve rapor biçimlerinde yayınlanan konferans bildirilerinden kapsamlı, disiplinler arası ve uluslararası içerik.

ISI Web of Knowledge<sup>SM</sup> Experience the new version with:-

All Databases Select a Database Web of Science Additional Resources

Search Cited Reference Search Structure Search Advanced Search Search History Marked List (0)

Web of Science® - with Conference Proceedings

Search for:

in Topic

Example: oil spill\* mediterranean

AND  in Author

Example: O'Brian C\* OR O'Brian C\*

Need help finding papers by an author? Use Author Finder.

AND  in Publication Name

Example: Cancer\* OR Journal of Cancer Research and Clinical Oncology

Add Another Field >>

Search Clear

# BIOSIS Previews (Biological Abstracts)

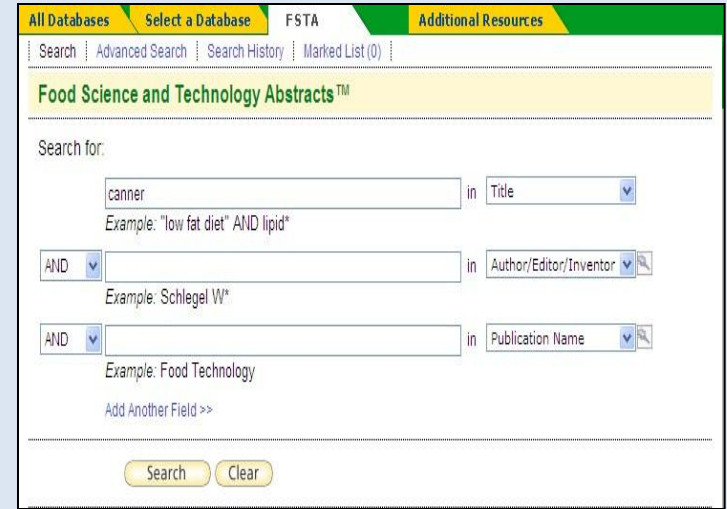
- Yaşam Bilimlerinde En Geniş Kapsamlı Alan Dizini
  - Biology, life sciences, agriculture, biodiversity, biotechnology, botany, drug discovery, gene therapy, marine biology, wildlife conservation, zoology, ....
- BIOSIS Veritabanı;
  - Biological Abstracts 1926 – günümüze
  - Dergilerle (6,000+) beraber konferans(1,500+) bildirileri, kitaplar ve patentler
  - CAS ve MeSH sistemleri ile entegra araştırma

The screenshot shows the BIOSIS Previews search interface. At the top, there is a navigation bar with links for "Sign In", "My EndNote Web", "My ResearcherID", "My Citation Alerts", and "My Journal List". The main header is green with the text "ISI Web of Knowledge<sup>SM</sup>" and "Experience the new version with...". Below the header, there are tabs for "All Databases", "Select a Database", "BIOSIS Previews", and "Additional Resources". The "BIOSIS Previews" tab is selected. The search area includes a "Search" button and links for "Advanced Search", "Search History", and "Marked List (0)". The search form is titled "BIOSIS Previews®" and has a "Search for:" label. It features three search fields with dropdown menus for "Topic", "Author", and "Publication Name". Each field has an "AND" dropdown and a search icon. Examples are provided for each field: "Example: bird\* migrat\* alaska\*" for Topic, "Example: DaCosta C\* OR Da Costa C\*" for Author, and "Example: Journal of Wildlife Management OR Wildlife Research" for Publication Name. There is also a link "Add Another Field >>". At the bottom of the search form, there are "Search" and "Clear" buttons.

# FSTA (Food Science & Technology Abstracts®)

## TANIM:

- International Food Information Service tarafından yayınlanan yiyecek ve meşrubat veritabanıdır.
- Gıda Bilimi, gıda teknolojisi ve insan beslenmesinin gıdalar ile ilişkisi üzerine uygulamalı araştırmalar sağlar.
- Bu geniş Gıda Bilimi veritabanı 750.000'den fazla kayıt içerir.
- FSTA ilk Pazar araştırmalarından paketlenmesine kadar gıda üretimin tüm aşamalarını kapsar.
- *ISI Web of Knowledge* parçasıdır



The screenshot displays the FSTA search interface. At the top, there are navigation tabs: "All Databases", "Select a Database" (highlighted), "FSTA", and "Additional Resources". Below these are links for "Search", "Advanced Search", "Search History", and "Marked List (0)". The main heading is "Food Science and Technology Abstracts™". The search area is titled "Search for:" and contains three input fields. The first field has the text "canner" and a dropdown menu set to "Title", with an example "Example: 'low fat diet' AND lipid\*". The second field has a dropdown menu set to "AND" and a dropdown menu set to "Author/Editor/Inventor", with an example "Example: Schlegel W\*". The third field has a dropdown menu set to "AND" and a dropdown menu set to "Publication Name", with an example "Example: Food Technology". Below the fields is a link "Add Another Field >>". At the bottom, there are "Search" and "Clear" buttons.

# CAB Abstracts

## CAB Abstracts

Kapsamlı Tarım & Uygulamalı Yaşam Bilimleri Araştırması

## Disiplinler

Tarım, ormancılık, insan beslenmesi, veterinerlik ve çevre alanlarını kapsar biçimde uygulamalı yaşam bilimlerinde içerik

## Kapsam

1910'dan günümüze 300,000'den fazla kayıt her yıl eklenmektedir.

6.9 milyon toplam kayıt

Kayıtların %95'i İngilizce özetli

9,000 süreli yayın; 3,500 kitap ve konferans bildirisi

150 ülkeden ve 50 farklı dilde literatür

ISI Web of Knowledge<sup>SM</sup> Experience the new version with...

All Databases Select a Database CABI Additional Resources

Search Advanced Search Search History Marked List (0)

CABI: CAB Abstracts® and Global Health®

Search for:

in Topic

Example: fish farm AND South America

AND  in Author/Editor

Example: Smith A B\* or De Simone F\*

AND  in Publication Name

Example: Plant Cell

Add Another Field >>

Search Clear

Current Limits: [Hide Limits and Settings](#) (To save these permanently, sign in or register.)

# Derwent Innovations Index Patent Veritabanı

- 35 milyon patent için 17 milyon icat açıklaması
- 41 yetkili patent yayıncısı
- 1966'dan günümüze kapsam, haftalık güncellemeler
- 1996'dan beri Japonya'dan bütün patentler
- Her hafta eklenen 20,000'nin üzerinde patent
- *Anahtar kelime* ve *atıf* taramaları ile patent temini
- *Web of Science* gibi diğer *Web of Knowledge* kaynaklarında çapraz sorgulama imkanı

ISI Web of Knowledge<sup>SM</sup> Take the next step

All Databases Select a Database Derwent Innovations Index Additional Resources

Search Cited Patent Search Compound Search Advanced Search Search History Marked List (0)

Derwent Innovations Index<sup>SM</sup>

Results Assignee Name & Code=(samsung)  
Timespan=All Years. Databases=CDerwent, EDerwent, IDerwent.  
Aderwent: (Sonuç yok)

Results: >100.000 Page 1 of 10.000 Go

Print E-mail Add to Marked List Save to EndNote Web Save to EndNote RefMan ProCite

Hide Refine Refine Results

Search within results for

Subject Areas Refine

- ENGINEERING (98,160)
- INSTRUMENTS & INSTRUMENTATION (72,474)
- COMPUTER SCIENCE (28,719)
- COMMUNICATION (26,822)
- CHEMISTRY (19,745)
- more options / values...

Assignee Names Refine

- SAMSUNG ELECTRONICS CO LTD (74,108)
- SAMSUNG SDI CO LTD (14,220)

1. IN200802099-I3; CN101515138-A; EP2093624-A1; ...  
Title: Developer cartridge, developing unit and image forming apparatus  
Assignee: SAMSUNG ELECTRONICS CO LTD  
Inventor(s): KWEON D, NOH J, SUR J, et. al  
Citing Patents: 0  
Original

2. IN200802109-I3; CN101515135-A; EP2093628-A2; ...  
Title: Developer cartridge, developing device and image forming apparatus  
Assignee: SAMSUNG ELECTRONICS CO LTD  
Inventor(s): CHOI S, EUN J, LEE S, et. al  
Citing Patents: 0  
Original

3. KR2009090435-A  
Title: Rotation device has base, joint, and wires, where joint is rotatable and is combined around base a driving part winds other ends of wires.

# Diğer Önemli Bilimsel Atıf Dizinleri

## [Inspec®](#) (1898-present)

A comprehensive index to the global journal and proceedings literature in physics, electrical/electronic engineering, computing, control engineering, and information technology.

[ [more](#) ] [ [hide](#) ]

- Includes Inspec Thesaurus, Classification Codes and other specialized search aids
- Backfiles available to 1898

## [MEDLINE®](#) (1950-present)

The U.S. National Library of Medicine® (NLM®) premier life sciences database.

[ [more](#) ] [ [hide](#) ]

- Explore biomedicine and life sciences, bioengineering, public health, clinical care, and plant and animal science
- Search precisely with Mesh terms and CAS registry numbers; link to NCBI databases and PubMed Related Articles
- Backfiles to 1950

## [Zoological Record®](#) (1864-present)

The world's leading taxonomic reference and oldest continuing database of animal biology.

[ [more](#) ]

# ISI Web Of Knowledge – BİLİM PLATFORMU

## Web of Science ile birlikte diğer bilimsel dizinlere bir arada ulaşın.

Sign In | My EndNote Web | My ResearcherID | My Citation Alerts | My Journal List | My Saved Searches | Log Out | H

## ISI Web of Knowledge<sup>SM</sup>

Experience the new version with: - BIOSIS Citation Index®  
- Chinese Science Citation Database®  
- Web of Science®

All Databases | Select a Database | **Web of Science** | Additional Resources

Use the "All Databases" tab above to search all databases, or select a single database from the list below.

<b>Web of Science®</b> (1898-present)  Access the world's leading scholarly literature in the sciences, social sciences, arts, and humanities and examine proceedings of international conferences, symposia, seminars, colloquia, workshops, and conventions. <a href="#">[ more ]</a>	<b>CABI</b> : (1910-present)  Provides authoritative research information on agriculture, environment and related applied life sciences. <a href="#">[ more ]</a>
<b>Current Contents Connect®</b> (1998-present)  Complete tables of contents and bibliographic information from the world's leading scholarly journals and books; also includes relevant, evaluated Web sites and documents. <a href="#">[ more ]</a>	<b>Food Science and Technology Abstracts™</b> (1969-present)  Provides thorough coverage of pure and applied research in food science, food technology, and food-related nutrition. <a href="#">[ more ]</a>
<b>Derwent Innovations Index<sup>SM</sup></b> (1963-present)  Value-added patent information from <i>Derwent World Patent Index</i> ® as well as patent citation information from <i>Patents Citation Index</i> ®. <a href="#">[ more ]</a>	<b>Inspec®</b> (1898-present)  A comprehensive index to the global journal and proceedings literature in physics, electrical/electronic engineering, computing, control engineering, and information technology. <a href="#">[ more ]</a>
<b>Biological Abstracts®</b> (1926-present)  An expansive index to the world's life sciences journal literature, with topics ranging from botany to microbiology to pharmacology. <a href="#">[ more ]</a>	<b>MEDLINE®</b> (1950-present)  The U.S. National Library of Medicine® (NLM®) premier life sciences database. <a href="#">[ more ]</a>
	<b>Zoological Record®</b> (1864-present)

More information for new users  
Thomson Reuters Sales

### Looking for ISI Proceedings

You can now find it within *Web of Science*, as the *Conference Proceedings Citation Index*. Use powerful *Web of Science* capabilities to search, analyze, and share conference proceedings data. [More information.](#)

### BIOSIS Citation Index **NEW!**

To access the new BIOSIS Citation Index, click the "Experience the new version" link at the top right corner of this page. [More information.](#)

### Chinese Science Citation Database **NEW!**

To access the new Chinese Science Citation Database, click the "Experience the new version" link at the top right corner of this page. [More information.](#)

### New from CABI!

Discover *Global Health*: Solve local

# ISI Web Of Knowledge – BİLİM PLATFORMU

**Bütün bilimsel dizinleri bir arada tarayın.**

Sign In | My EndNote Web | My ResearcherID | My Citation Alerts | My Journal List | My Saved Searches | Log Out

## ISI Web of Knowledge<sup>SM</sup>

Experience the new version with: - BIOSIS Citation Index®  
- Chinese Science Citation Databases®  
- Web of Science®

All Databases | **Select a Database** | Web of Science | Additional Resources

Search | Search History | Marked List (0)

### ALL DATABASES

Search for:

in Topic

*Example: oil spill\* mediterranean*

AND  in Author

*Example: O'Brian C\* OR OBrian C\**

AND  in Publication Name

*Example: Cancer\* OR Journal of Cancer Research and Clinical Oncology*

[Add Another Field >>](#)

Limit to:

View in: [简体中文](#) | [English](#) | [日本語](#)

Please give us your [feedback](#) on using ISI Web of Knowledge.

[Acceptable Use Policy](#)

Thomson Reuters Sales

More info for new users

### Discover ISI Web of Knowledge

Quickly find, analyze, and manage information in the sciences, social sciences, arts, and humanities with this versatile workflow solution.

- [Want to know more?](#)
- [Training in multiple languages](#)

### Customize Your Experience

[Sign In](#) | [Register](#)

- Save and manage your references online with *EndNote Web* – freely available and fully integrated.
- Save and run searches
- Create alerts and RSS feeds
- Choose your start page
- [Want to know more?](#)

### My ResearcherID

- [What is ResearcherID?](#)
- [Sign In](#) to ISI Web of Knowledge to get your ResearcherID.

# ISI Web Of Knowledge ile

- Web of Knowledge üzerindeki diğer veri tabanları arasında atıf geçişlerini görüntüleyebilirsiniz. **Dolayısıyla atıf gruplarına göre puanlama yaparak atıf performansı incelemesi yapabilirsiniz.**

**Citing Articles** Title: Induction of pluripotent stem cells from mouse  
Author(s): [Takahashi, Kazutoshi, Yamanaka, Shinya]  
Source: CELL) Volume: 126 Issue: 4 Pages: 663-676 Pub  
[Citation Map](#)

This article has been cited by articles in

704 in All Databases

**+ 505 in Web of Science**

528 in BIOSIS Citation Index

31 in Chinese Science Citation Database

- Tüm veri tabanlarından (all databases search) taradığınızda sonuçları veritabanlarına göre sınırlandırabilirsiniz. **Dolayısıyla bilimsel dizine göre makale puanlaması yaparak performans incelemesi yapabilirsiniz.**

Results: **Approximately 1,689,264**

**Refine Results**

Search within results for

[Search](#) [Refine](#)

**Databases**

BCI

WOS

CSCD

[more options / values...](#)

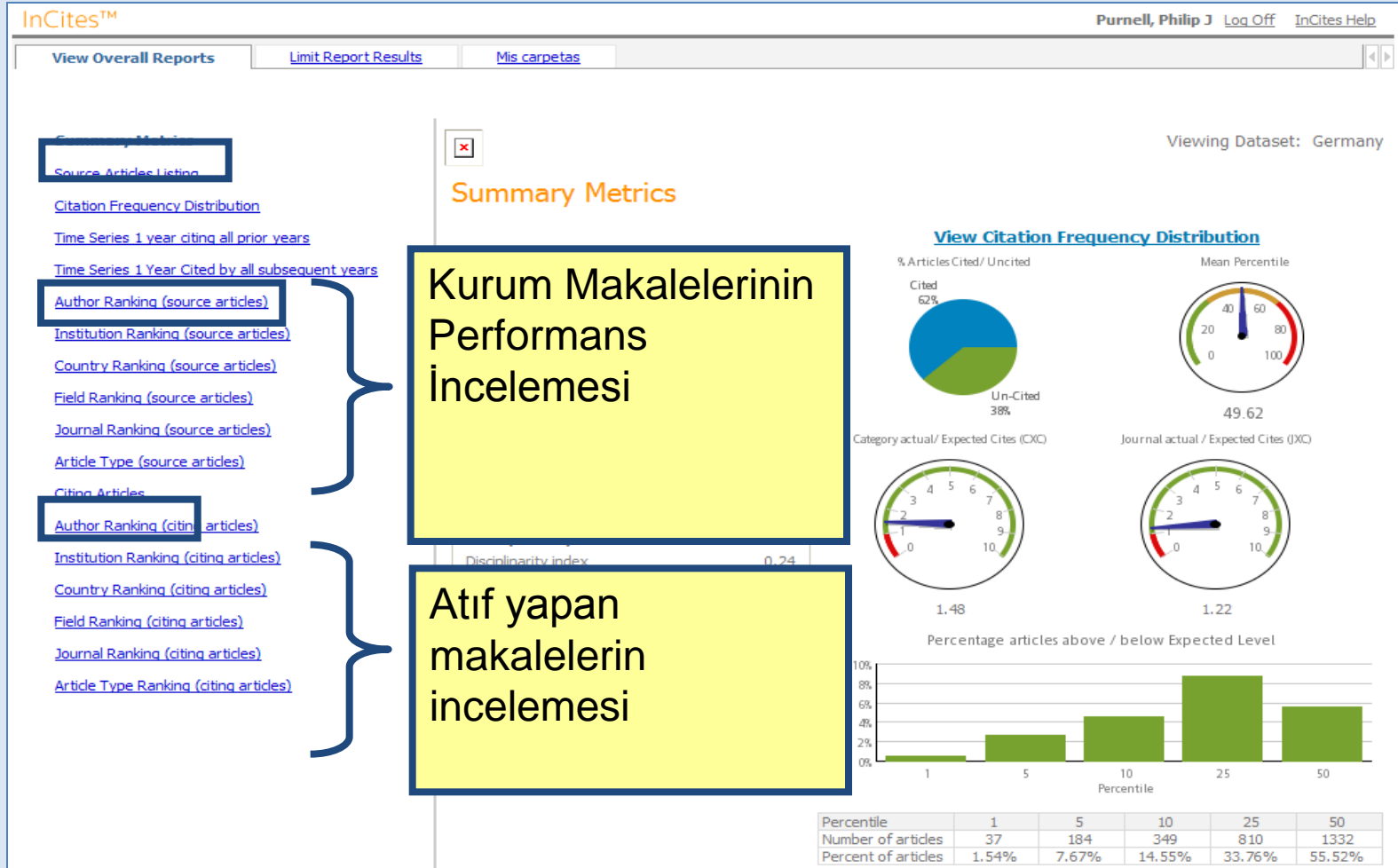
**General Categories** [Refine](#)

**INCITES™**

**Performans İncelemesinde  
BİLİMSEL ÇÖZÜM**

# INCITES

## Kuruma Ait Yayınlar ve Bunlara Atıf Veren Yayınların İncelemesi



# Bizim En Etkili Yazarlarımız Kimler???

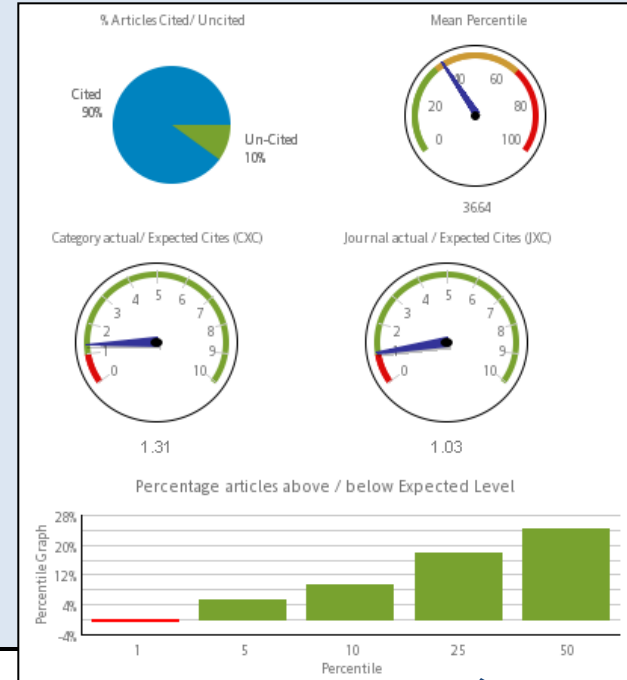
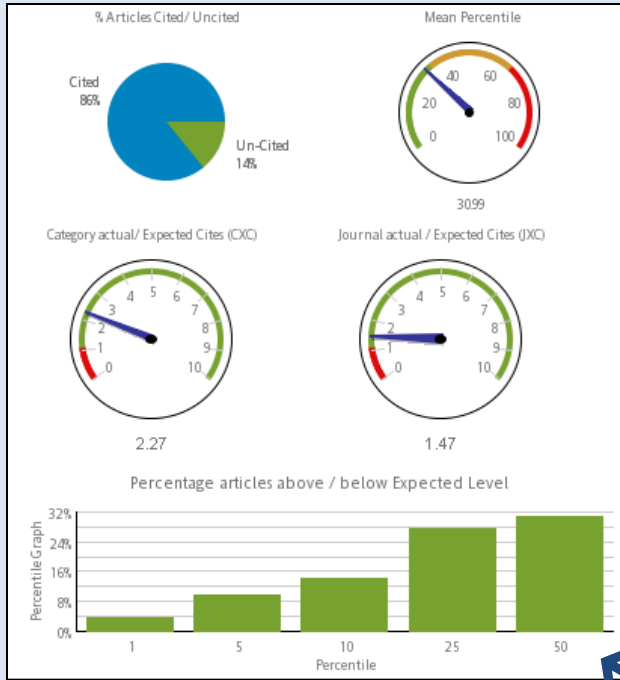
## Author Ranking (source articles)

Rank determined by total citations

Sort By: **Total Citations**

Rank	Author	Total Citations	Total Articles	Avg Cites per Article	h-index	Journal actual / Expected Cites (JXC)	Category actual / Expected Cites (CXC)	Mean Percentile
1	THOMAS, DY	<a href="#">8,938</a>	<a href="#">159</a>	<a href="#">56.21</a>	<a href="#">53</a>	<a href="#">1.08</a>	<a href="#">2.10</a>	<a href="#">28.02</a>
2	CYGLER, M	<a href="#">5,818</a>	<a href="#">148</a>	<a href="#">39.31</a>	<a href="#">34</a>	<a href="#">1.31</a>	<a href="#">2.07</a>	<a href="#">41.48</a>
3	MASSIE, B	<a href="#">4,292</a>	<a href="#">113</a>	<a href="#">37.98</a>	<a href="#">34</a>	<a href="#">1.47</a>	<a href="#">2.27</a>	<a href="#">30.99</a>
4	LUONG, JHT	<a href="#">3,470</a>	<a href="#">188</a>	<a href="#">18.46</a>	<a href="#">32</a>	<a href="#">1.03</a>	<a href="#">1.31</a>	<a href="#">36.64</a>
5	WHITEWAY, M	<a href="#">3,398</a>	<a href="#">91</a>	<a href="#">37.34</a>	<a href="#">30</a>	<a href="#">1.04</a>	<a href="#">2.03</a>	<a href="#">33.78</a>
6	DIGNARD, D	<a href="#">3,116</a>	<a href="#">40</a>	<a href="#">77.90</a>	<a href="#">27</a>	<a href="#">1.39</a>	<a href="#">3.08</a>	<a href="#">19.89</a>
7	BANVILLE, D	<a href="#">3,088</a>	<a href="#">62</a>	<a href="#">49.81</a>	<a href="#">29</a>	<a href="#">1.20</a>	<a href="#">1.92</a>	<a href="#">33.66</a>
8	SHEN, SH	<a href="#">2,925</a>	<a href="#">90</a>	<a href="#">32.50</a>	<a href="#">29</a>	<a href="#">0.85</a>	<a href="#">1.46</a>	<a href="#">41.53</a>
9	SCHRAG, JD	<a href="#">2,707</a>	<a href="#">44</a>	<a href="#">61.52</a>	<a href="#">21</a>	<a href="#">1.48</a>	<a href="#">2.76</a>	<a href="#">28.06</a>
10	BERGERON, JJM	<a href="#">2,702</a>	<a href="#">43</a>	<a href="#">62.84</a>	<a href="#">24</a>	<a href="#">1.25</a>	<a href="#">2.91</a>	<a href="#">20.89</a>
11	MOSSER, DD	<a href="#">2,555</a>	<a href="#">23</a>	<a href="#">111.09</a>	<a href="#">18</a>	<a href="#">2.63</a>	<a href="#">4.09</a>	<a href="#">19.42</a>
12	BROUSSEAU, R	<a href="#">2,421</a>	<a href="#">101</a>	<a href="#">23.97</a>	<a href="#">29</a>	<a href="#">1.06</a>	<a href="#">1.41</a>	<a href="#">34.51</a>
13	STORER, AC	<a href="#">2,404</a>	<a href="#">68</a>	<a href="#">35.35</a>	<a href="#">29</a>	<a href="#">1.14</a>	<a href="#">1.45</a>	<a href="#">31.82</a>
14	LEBERER, E	<a href="#">2,328</a>	<a href="#">38</a>	<a href="#">61.26</a>	<a href="#">23</a>	<a href="#">0.99</a>	<a href="#">2.29</a>	<a href="#">28.23</a>
15	VERNET, T	<a href="#">2,206</a>	<a href="#">38</a>	<a href="#">58.05</a>	<a href="#">25</a>	<a href="#">1.27</a>	<a href="#">1.96</a>	<a href="#">25.14</a>
16	MENARD, R	<a href="#">2,052</a>	<a href="#">74</a>	<a href="#">27.73</a>	<a href="#">27</a>	<a href="#">1.15</a>	<a href="#">1.41</a>	<a href="#">36.44</a>
17	HAWARI, J	<a href="#">2,036</a>	<a href="#">127</a>	<a href="#">16.03</a>	<a href="#">24</a>	<a href="#">1.32</a>	<a href="#">1.77</a>	<a href="#">35.41</a>
18	MASSON, L	<a href="#">1,953</a>	<a href="#">78</a>	<a href="#">25.04</a>	<a href="#">25</a>	<a href="#">1.29</a>	<a href="#">1.75</a>	<a href="#">31.93</a>
19	GROCHULSKI, P	<a href="#">1,664</a>	<a href="#">15</a>	<a href="#">110.93</a>	<a href="#">12</a>	<a href="#">2.66</a>	<a href="#">4.74</a>	<a href="#">14.07</a>
20	TESSIER, DC	<a href="#">1,554</a>	<a href="#">34</a>	<a href="#">45.71</a>	<a href="#">23</a>	<a href="#">1.22</a>	<a href="#">1.88</a>	<a href="#">24.34</a>

# Görsel Öğeler ve Normalleştirilmiş Verilerle Yazarlarınızı Karşılaştırın



## Author Ranking (source articles)

Rank determined by total citations

Sort By: Total Citations

Rank	Author	Total Citations	Total Articles	Avg Cites per Article	h-index	Journal actual / Expected Cites (JXC)	Category actual / Expected Cites (CXC)	Mean Percentile
1	THOMAS, DY	8,938	159	56.21	53	1.08	2.10	38.02
2	CYGLER, M	5,818	148	39.31	34	1.31	2.07	41.48
3	MASSIE, B	4,292	113	37.98	34	1.47	2.27	30.99
4	LUONG, JHT	3,470	188	18.46	32	1.03	1.31	36.64
5	WHITEWAY, M	3,398	91	37.34	30	1.04	2.03	33.78
6	DIGNARD, D	3,116	40	77.90	27	1.39	3.08	19.89
7	BANVILLE, D	3,088	62	49.81	29	1.20	1.92	33.66
8	SHEN SH	2,925	90	32.50	29	0.85	1.46	41.53

# Kurumumuz hangi kurumlarla işbirliği gerçekleştiriyor?

## Institution Ranking (source articles)

Rank determined by total citations

Sort By: Total Citations

Rank	Institution	Total Citations	Total Articles	Avg Cites per Article	h-index	Journal actual / Expected Cites (JXC)	Category actual / Expected Cites (CXC)	Mean Percentile
1	UNIV HEIDELBERG	<a href="#">1,089</a>	<a href="#">120</a>	<a href="#">9.08</a>	<a href="#">18</a>	<a href="#">1.35</a>	<a href="#">1.85</a>	<a href="#">48.51</a>
2	EUROPEAN MOL BIOL LAB	<a href="#">1,086</a>	<a href="#">33</a>	<a href="#">32.91</a>	<a href="#">14</a>	<a href="#">1.76</a>	<a href="#">4.29</a>	<a href="#">17.98</a>
3	UNIV MUNICH	<a href="#">951</a>	<a href="#">169</a>	<a href="#">5.63</a>	<a href="#">16</a>	<a href="#">1.00</a>	<a href="#">1.22</a>	<a href="#">47.80</a>
4	HUMBOLDT UNIV	<a href="#">870</a>	<a href="#">104</a>	<a href="#">8.37</a>	<a href="#">16</a>	<a href="#">1.22</a>	<a href="#">1.72</a>	<a href="#">45.73</a>
5	TECH UNIV MUNICH	<a href="#">757</a>	<a href="#">95</a>	<a href="#">7.97</a>	<a href="#">15</a>	<a href="#">1.19</a>	<a href="#">1.66</a>	<a href="#">51.02</a>
6	HARVARD UNIV	<a href="#">670</a>	<a href="#">49</a>	<a href="#">13.67</a>	<a href="#">13</a>	<a href="#">1.88</a>	<a href="#">3.14</a>	<a href="#">38.79</a>
7	UNIV DUSSELDORF	<a href="#">617</a>	<a href="#">54</a>	<a href="#">11.43</a>	<a href="#">12</a>	<a href="#">1.22</a>	<a href="#">2.16</a>	<a href="#">42.97</a>
8	UNIV COLOGNE	<a href="#">616</a>	<a href="#">68</a>	<a href="#">9.06</a>	<a href="#">15</a>	<a href="#">1.36</a>	<a href="#">1.68</a>	<a href="#">46.25</a>
9	UNIV BONN	<a href="#">471</a>	<a href="#">87</a>	<a href="#">5.41</a>	<a href="#">12</a>	<a href="#">1.21</a>	<a href="#">1.45</a>	<a href="#">44.51</a>
10	UNIV TUBINGEN	<a href="#">469</a>	<a href="#">84</a>	<a href="#">5.58</a>	<a href="#">13</a>	<a href="#">1.11</a>	<a href="#">1.29</a>	<a href="#">45.03</a>
11	UNIV MUNSTER	<a href="#">443</a>	<a href="#">76</a>	<a href="#">5.83</a>	<a href="#">10</a>	<a href="#">1.34</a>	<a href="#">1.63</a>	<a href="#">51.52</a>
12	UNIV KONSTANZ	<a href="#">435</a>	<a href="#">39</a>	<a href="#">11.15</a>	<a href="#">13</a>	<a href="#">1.38</a>	<a href="#">1.81</a>	<a href="#">36.84</a>
13	UNIV MAINZ	<a href="#">431</a>	<a href="#">55</a>	<a href="#">7.84</a>	<a href="#">12</a>	<a href="#">1.32</a>	<a href="#">1.35</a>	<a href="#">36.04</a>
14	UNIV JENA	<a href="#">428</a>	<a href="#">94</a>	<a href="#">4.55</a>	<a href="#">10</a>	<a href="#">1.39</a>	<a href="#">1.06</a>	<a href="#">53.77</a>
15	MAX PLANCK INST EVOLUTIONARY ANTHROPOLOG	<a href="#">419</a>	<a href="#">32</a>	<a href="#">13.09</a>	<a href="#">11</a>	<a href="#">1.04</a>	<a href="#">3.17</a>	<a href="#">28.71</a>
16	UNIV WURZBURG	<a href="#">409</a>	<a href="#">73</a>	<a href="#">5.60</a>	<a href="#">12</a>	<a href="#">1.19</a>	<a href="#">1.60</a>	<a href="#">43.76</a>
17	FREE UNIV BERLIN	<a href="#">408</a>	<a href="#">54</a>	<a href="#">7.56</a>	<a href="#">12</a>	<a href="#">1.44</a>	<a href="#">1.78</a>	<a href="#">48.18</a>
17	MAX DELBRUCK CTR MOL MED	<a href="#">408</a>	<a href="#">29</a>	<a href="#">14.07</a>	<a href="#">11</a>	<a href="#">1.34</a>	<a href="#">1.93</a>	<a href="#">34.72</a>
18	UNIV GOTTINGEN	<a href="#">397</a>	<a href="#">110</a>	<a href="#">3.61</a>	<a href="#">10</a>	<a href="#">1.41</a>	<a href="#">1.52</a>	<a href="#">56.35</a>
19	UNIV REGENSBURG	<a href="#">388</a>	<a href="#">62</a>	<a href="#">6.26</a>	<a href="#">12</a>	<a href="#">1.21</a>	<a href="#">1.27</a>	<a href="#">48.46</a>

# Bu işbirliklerinin hangileri en değerlileri?

Rank	Institution	Total Citations	Total Articles	Avg Cites per Article	h-index	Journal actual / Expected Cites (JC)	Category actual / Expected Cites (CC)	Mean Percentile
89	MAX PLANCK INST MOL PHYSIOL	<a href="#">71</a>	<a href="#">10</a>	<a href="#">7.10</a>	<a href="#">4</a>	<a href="#">1.30</a>	<a href="#">1.45</a>	<a href="#">13.12</a>
105	UNIV ESSEN GESAMTHSCH	<a href="#">35</a>	<a href="#">13</a>	<a href="#">2.69</a>	<a href="#">3</a>	<a href="#">2.34</a>	<a href="#">2.08</a>	<a href="#">17.08</a>
35	MAX PLANCK INST MED RES	<a href="#">246</a>	<a href="#">10</a>	<a href="#">24.60</a>	<a href="#">8</a>	<a href="#">1.11</a>	<a href="#">3.70</a>	<a href="#">17.85</a>
2	EUROPEAN MOL BIOL LAB	<a href="#">1,086</a>	<a href="#">33</a>	<a href="#">32.91</a>	<a href="#">14</a>	<a href="#">1.76</a>	<a href="#">4.29</a>	<a href="#">17.98</a>
43	UNIV CALIF SAN DIEGO	<a href="#">219</a>	<a href="#">25</a>	<a href="#">8.76</a>	<a href="#">7</a>	<a href="#">1.89</a>	<a href="#">3.32</a>	<a href="#">21.23</a>
52	COLUMBIA UNIV	<a href="#">174</a>	<a href="#">15</a>	<a href="#">11.60</a>	<a href="#">6</a>	<a href="#">2.08</a>	<a href="#">3.99</a>	<a href="#">21.56</a>
94	INDIANA UNIV	<a href="#">63</a>	<a href="#">12</a>	<a href="#">5.25</a>	<a href="#">3</a>	<a href="#">0.95</a>	<a href="#">2.47</a>	<a href="#">22.09</a>
30	UNIV QUEENSLAND	<a href="#">270</a>	<a href="#">10</a>	<a href="#">27.00</a>	<a href="#">7</a>	<a href="#">1.48</a>	<a href="#">3.29</a>	<a href="#">22.49</a>
92	CALTECH	<a href="#">67</a>	<a href="#">10</a>	<a href="#">6.70</a>	<a href="#">5</a>	<a href="#">1.10</a>	<a href="#">1.74</a>	<a href="#">23.10</a>
66	UNIV HELSINKI	<a href="#">136</a>	<a href="#">10</a>	<a href="#">13.60</a>	<a href="#">6</a>	<a href="#">2.29</a>	<a href="#">3.09</a>	<a href="#">23.49</a>
69	UNIV COLORADO	<a href="#">130</a>	<a href="#">11</a>	<a href="#">11.82</a>	<a href="#">5</a>	<a href="#">2.12</a>	<a href="#">3.60</a>	<a href="#">25.83</a>
88	NCI	<a href="#">72</a>	<a href="#">10</a>	<a href="#">7.20</a>	<a href="#">3</a>	<a href="#">1.87</a>	<a href="#">2.12</a>	<a href="#">25.92</a>
38	UNIV EDINBURGH	<a href="#">238</a>	<a href="#">14</a>	<a href="#">17.00</a>	<a href="#">6</a>	<a href="#">2.05</a>	<a href="#">3.65</a>	<a href="#">26.08</a>
54	UNIV SHEFFIELD	<a href="#">166</a>	<a href="#">12</a>	<a href="#">13.83</a>	<a href="#">6</a>	<a href="#">2.05</a>	<a href="#">3.24</a>	<a href="#">26.45</a>
37	UNIV GRONINGEN	<a href="#">240</a>	<a href="#">15</a>	<a href="#">16.00</a>	<a href="#">9</a>	<a href="#">1.68</a>	<a href="#">2.71</a>	<a href="#">26.70</a>
45	UPPSALA UNIV	<a href="#">197</a>	<a href="#">12</a>	<a href="#">16.42</a>	<a href="#">4</a>	<a href="#">2.02</a>	<a href="#">4.04</a>	<a href="#">26.72</a>
51	UNIV CALIF LOS ANGELES	<a href="#">175</a>	<a href="#">17</a>	<a href="#">10.29</a>	<a href="#">6</a>	<a href="#">1.71</a>	<a href="#">2.33</a>	<a href="#">27.55</a>
36	UNIV LONDON IMPERIAL COLL SCI TECHNOL & MED	<a href="#">242</a>	<a href="#">15</a>	<a href="#">16.13</a>	<a href="#">6</a>	<a href="#">1.42</a>	<a href="#">2.43</a>	<a href="#">27.87</a>
23	UNIV CALIF BERKELEY	<a href="#">377</a>	<a href="#">26</a>	<a href="#">14.50</a>	<a href="#">10</a>	<a href="#">1.67</a>	<a href="#">3.58</a>	<a href="#">28.00</a>
15	MAX PLANCK INST EVOLUTIONARY	<a href="#">419</a>	<a href="#">32</a>	<a href="#">13.09</a>	<a href="#">11</a>	<a href="#">1.04</a>	<a href="#">3.17</a>	<a href="#">28.71</a>

# Daha Detaylı Analizler İçin Daha Detaylı İstatistikler

InCites™

Purnell, Philip J Log Off InCites Help

Keep this version

**Step 1:** Select the article report type

**Step 2:** Select the report you would like

**Step 3:** Select the element(s) you would like to analyze

- Author
- Institution
- Country
- Field**
- Journal
- Word
- Article Type
- Year

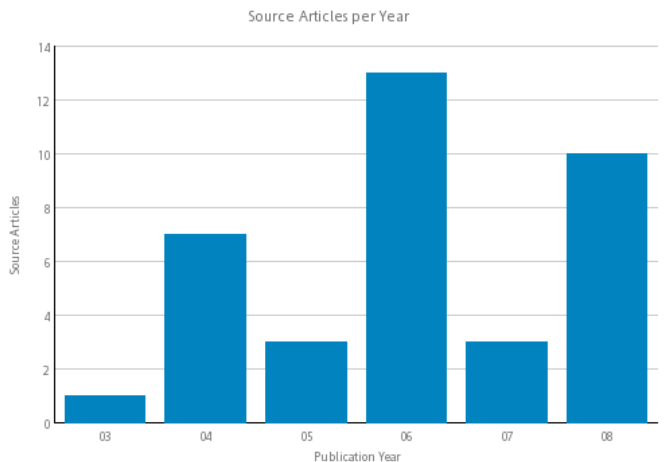
**Step 4:** Set thresholds to limit the results

No. of Citations:  No. of Records:

**Step 5:** Click "Limit Report" to run the report

Limit Source Articles Report

**Source Articles per Year**

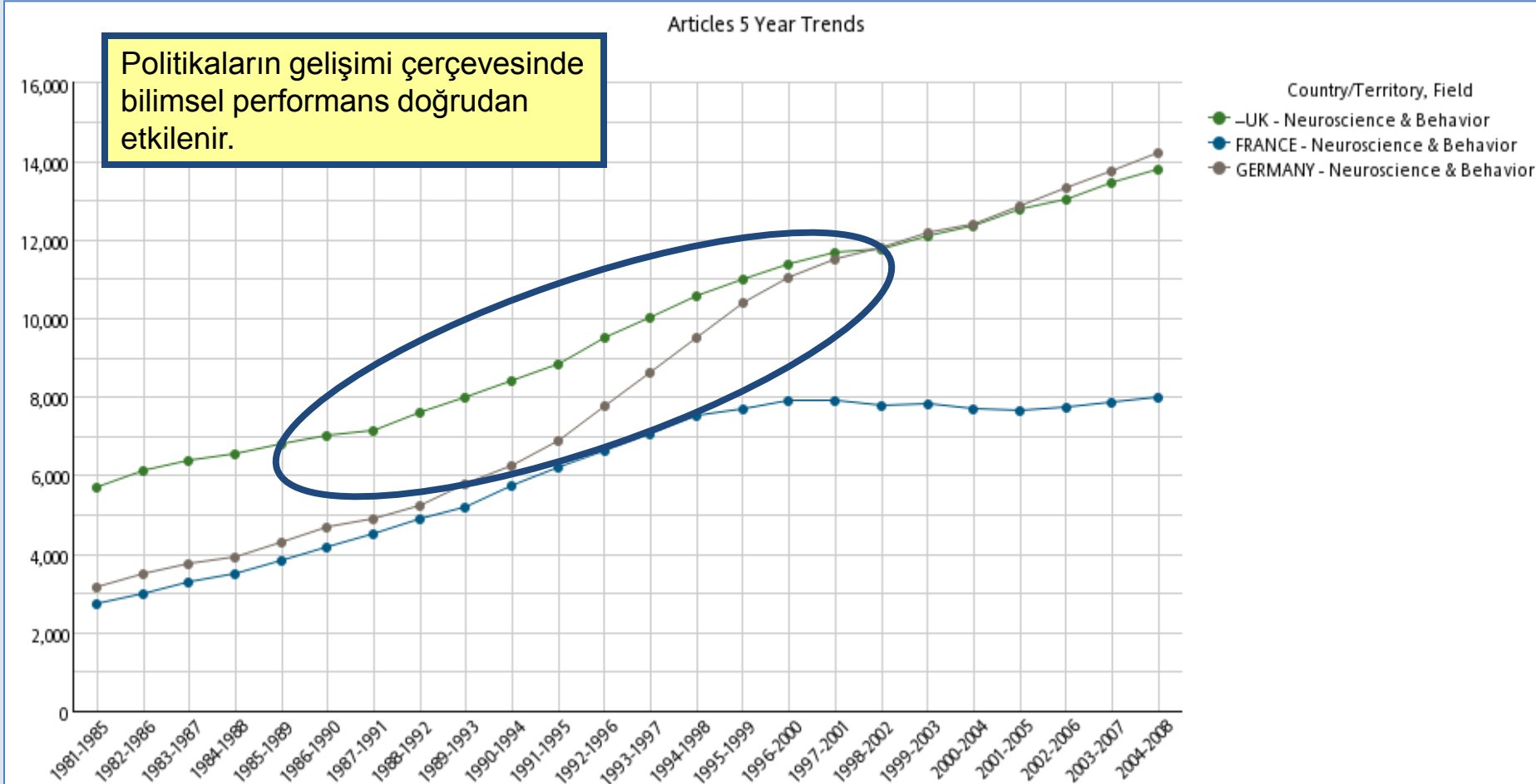


Total Citations	2nd Generation Citations	2nd Generation Citations per Citing article	Journal Expected Citations (JXC)	Category Expected Citations (CXC)	Percentile in Field	Journal Impact Factor	Publication Year	Field	Article Type	Author	Journal	Article Title	Vol	Pgs
<a href="#">28</a>	202	7.21	8.32	8.20	4.66	1.71	2004	<a href="#">STATISTICS &amp; PROBABILITY</a>	ARTICLE	<a href="#">WELLEK, S</a>	BIOMETRICS	<a href="#">Tests for establishing compatibility of an observed genotype distribution with Hardy-Weinberg equilibrium in the case of a biallelic locus</a>	60	694-703
<a href="#">8</a>	10	1.25	1.88	1.56		1.71	2003	<a href="#">BIOLOGY</a>	EDITORIAL	<a href="#">WIENKE, A</a>	BIOMETRICS	<a href="#">A bivariate frailty model with a cure fraction for modeling familial correlations in diseases</a>	59	1178-1183
<a href="#">8</a>	2	0.25	1.70	1.78	14.15	1.71	2006	<a href="#">STATISTICS &amp; PROBABILITY</a>	ARTICLE	<a href="#">BOHNING, D</a>	BIOMETRICS	<a href="#">Equivalence of truncated count mixture distributions and mixtures of truncated count distributions</a>	62	1207-1215
<a href="#">8</a>	8	1.00	1.70	1.78	5.95	1.71	2006	<a href="#">STATISTICS &amp; PROBABILITY</a>	ARTICLE	<a href="#">TUTZ, G</a>	BIOMETRICS	<a href="#">Generalized additive</a>	62	961-

Sort By: Total Citations

Number of articles	37	184	349	810	1332
Percent of articles	1.54%	7.67%	14.55%	33.76%	55.52%

# Politika Değişiminin Etkilerini İnceleyin; NeuroScience Alanında İngiltere, Fransa ve Almanya Örneği.





# Teşekkürler!

## **İSTANBUL MERKEZ**

Ebulula Caddesi Ülgen Sokak No:52 34330 İstanbul / Türkiye

**Tel:**+90 212 283 56 60

**Faks:** +90 212 283 57 27

## **ANKARA OFİS**

Tunus Caddesi 44/4 06680 Ankara / Türkiye

**Tel:**+90 312 428 22 88

**Faks:** +90 312 426 46 73

[isi@mikrobilgi.com.tr](mailto:isi@mikrobilgi.com.tr)